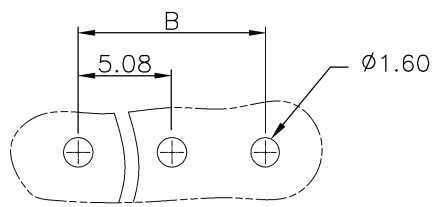
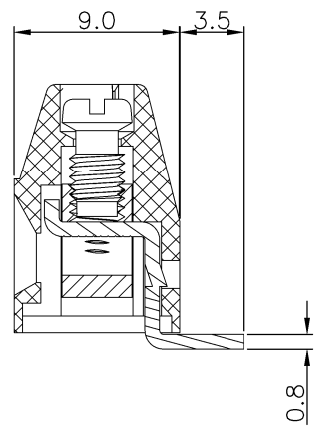
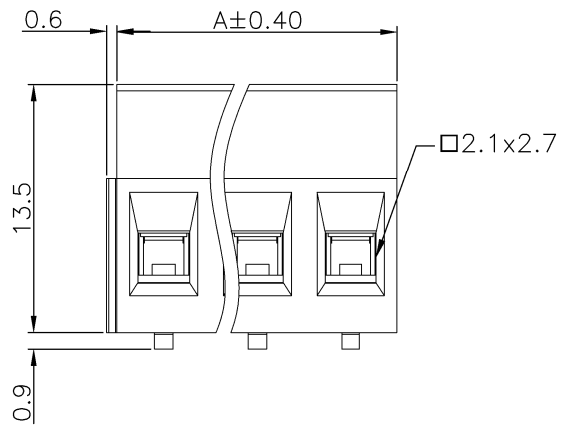
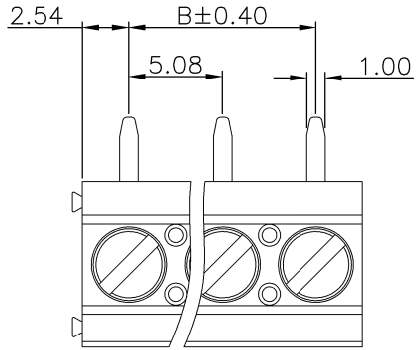


REV.	SPECIFICATION	ECN NO.	APPD.

Material:
Housing: PA66, UL94V-0.
Solder Pin: Brass, Tin Plated.
Clamp: Brass, Ni Plated.
Screw: Steel, Zinc Plated. M3.
Electrical Characteristics:
Voltage Rating: 300V.
Current Rating: 16A .
Solid Wire(AWG): 12-28.
Stranded Wire(AWG): 12-28.
Torque: 3.5Lb-In.
Wire Strip Length:6-7mm.
Withstanding Voltage: 1.6KV.
Operating Temperature: -40°C~+115°C.
***RoHS Compliant**



P.C.Board Layout

Series 8932- G 090135 G AA xx R B
 G: Pitch 5.08mm
 Manufacturing Code
 G: Green
 B: Black
 Y: Grey
 U: Blue
 B: Bulk Package for 2~4Pos
 Box Package for 5~24Pos
 R: Right Angle
 No.of Positions
 AA: Slotted " - " Screw

Dimension		
Positions	A	B
02	10.16	5.08
03	15.24	10.16
04	20.32	15.24
05	25.40	20.32
06	30.48	25.40
07	35.56	30.48
08	40.64	35.56
09	45.72	40.64
10	50.80	45.72
11	55.88	50.80
12	60.96	55.88
13	66.04	60.96
14	71.12	66.04
15	76.20	71.12
16	81.28	76.20
17	86.36	81.28
18	91.44	86.36
19	96.52	91.44
20	101.60	96.52
21	106.68	101.60
22	111.76	106.68
23	116.84	111.76
24	121.92	116.84

Tolerances	Dwg No.	8932D02022	Title:	8932 Series 5.08mm Terminal Block	 OUPIIN ELECTRONIC(KUNSHAN) CO., LTD. P/N: 8932-G090135GAAxxRB			
x. = ±0.50	Projection		Scale			1:1		
.x = ±0.25	Unit	mm	Drawn By			Martin 08/09'21		
.xx = ±0.15	Scale	1:1	⑦780					
					SHEET	1/1	Ver.No.	A2