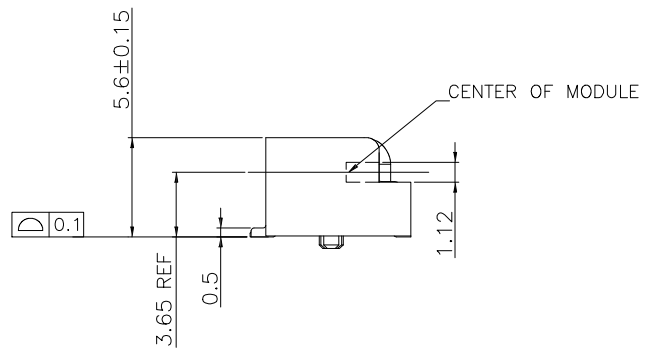
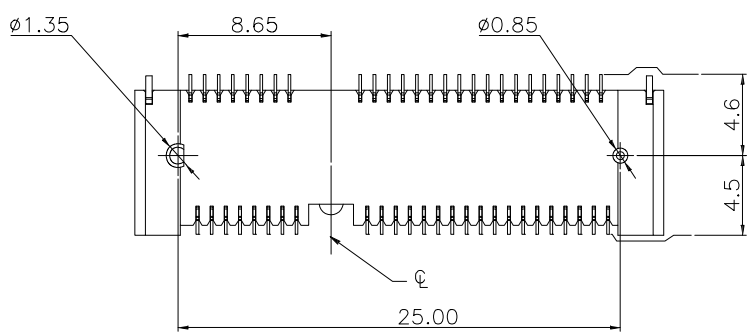
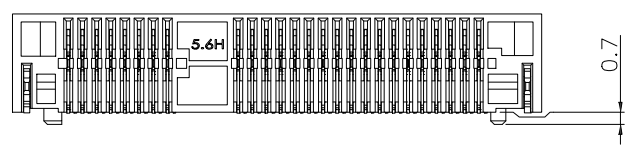
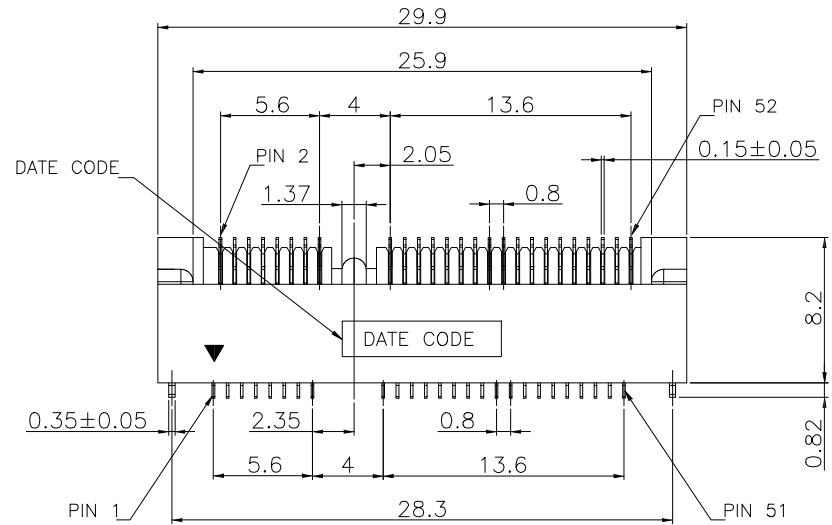


REV.	SPECIFICATION	ECN NO.	APPD.



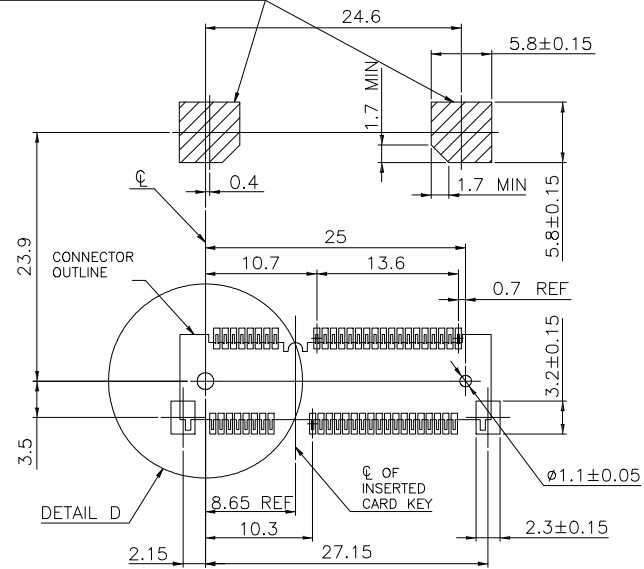
8402-A 52 G 00 A 3 T  
 Series ——— Positions ——— G:Gold Plated ——— 00:Gold Flash ——— 10:10u" ——— 30:.30u" ———  
 A:Top Mount Type ——— T:Tape & reel Package ——— 3:5.60mm Height ———

**Material:**  
 Housing: LCP, UL94V-0, Black.  
 Contacts: Phosphor Bronze, Gold Plated on Contact Area and Gold Flash on Solder Tail over Nickel 50u".  
 Solder Tab: Brass, 120u" Matte Tin Plated over Nickel 50u".  
**Electrical Characteristics:**  
 Current Rating: 0.5A.  
 Dielectric Withstanding Voltage: AC 300V.  
 Insulation Resistance: 500MΩ min.  
 Contact Resistance: 55mΩ max.  
 Operating Temperature: -55°C~+85°C.  
**\*RoHS Compliant**

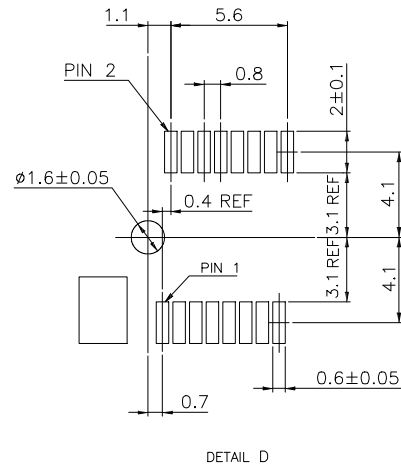
Tolerances x. = ±0.40 .x = ±0.30 .xx = ±0.20 .xxx = ±0.15	Dwg. No.	8402D01013		Title: 8402-A Series Mini PCI Express H:5.60mm 716			
	Projection					SHEET   1/4   Ver.No.   A1	
	Unit	mm	Scale				1:N
	Drawn By	Martin 11/15'23					
OUPIIN ELECTRONIC(KUNSHAN) CO., LTD. P/N: 8402-A52G00A3T							

REV.	SPECIFICATION	ECN NO.	APPD.

COMPONENT KEEP OUT AREA FOR  
CARD HOLD DOWN SOLUTION

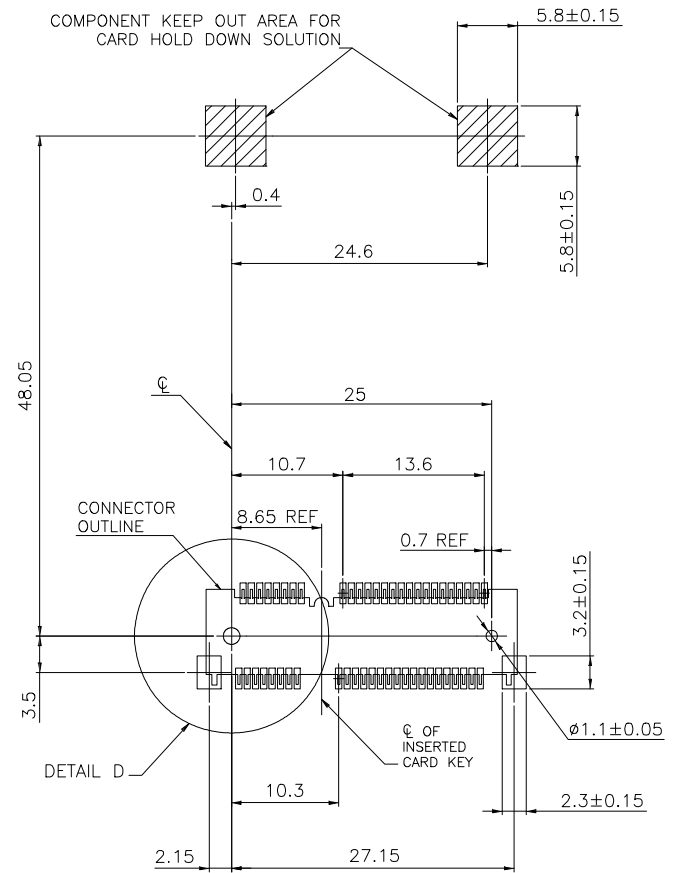


RECOMMENDED P.C. BOARD PATTERN LAYOUT  
FOR HALF CARD CONNECTOR

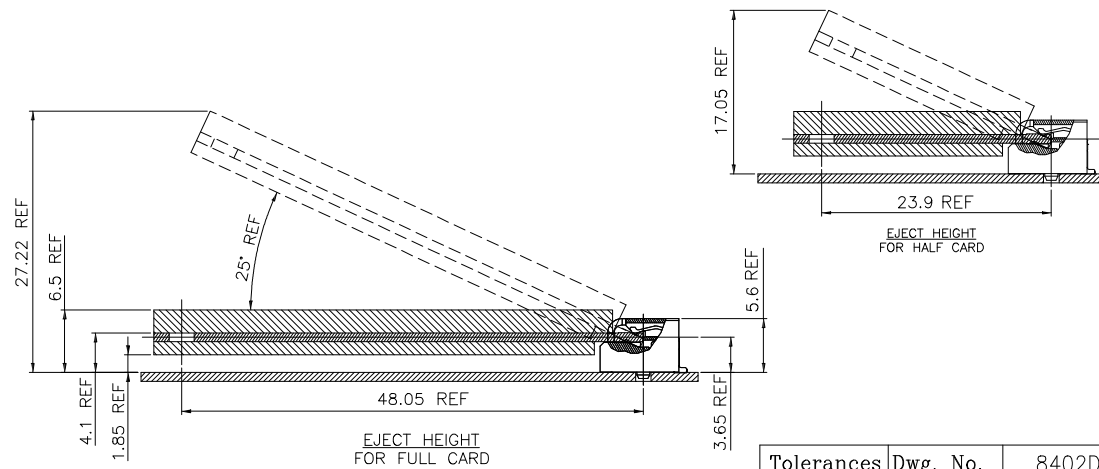


DETAIL D

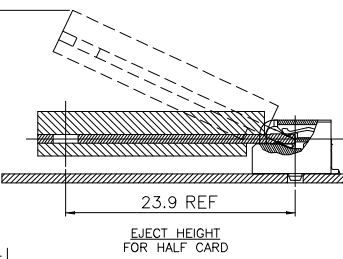
COMPONENT KEEP OUT AREA FOR  
CARD HOLD DOWN SOLUTION




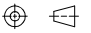
RECOMMENDED P.C. BOARD PATTERN LAYOUT  
FOR FULL CARD CONNECTOR



EJECT HEIGHT  
FOR FULL CARD

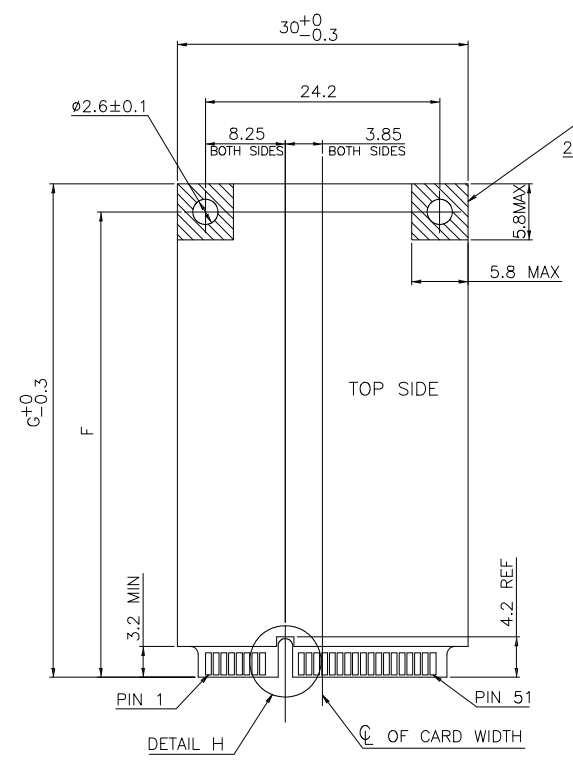
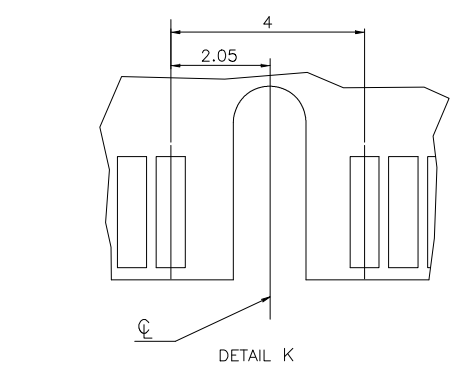
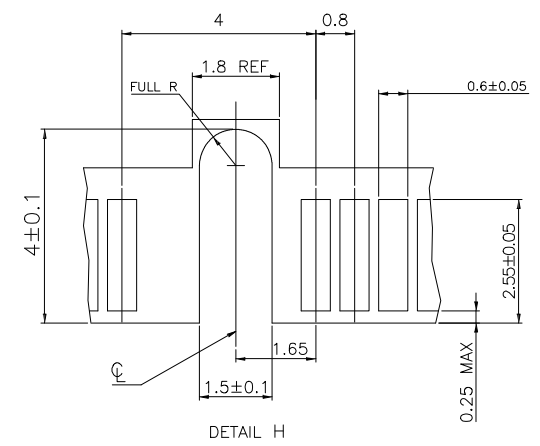


EJECT HEIGHT  
FOR HALF CARD

<b>Tolerances</b> .x = ±0.40 .x = ±0.30 .xx = ±0.20 .xxx = ±0.15	Dwg. No.	8402D01013		Title: 8402-A Series Mini PCI Express H:5.60mm ① 716	 OUPIN ELECTRONIC(KUNSHAN) CO., LTD. P/N: 8402-A52G00A3T				
	Projection								
	Unit	mm	Scale		1:N	SHEET	2/4	Ver.No.	A1
	Drawn By	Martin 11/15'23							

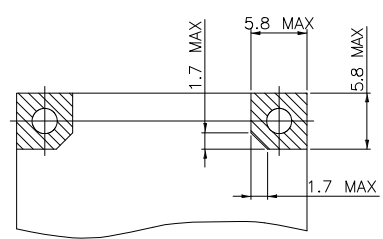
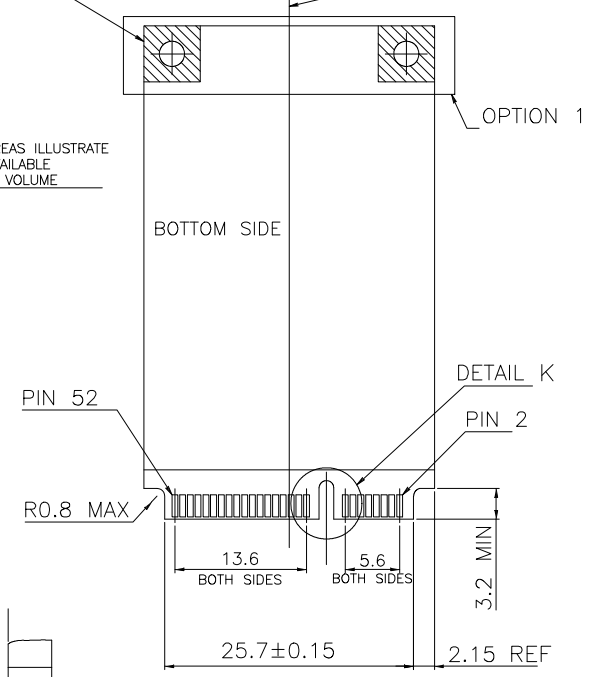
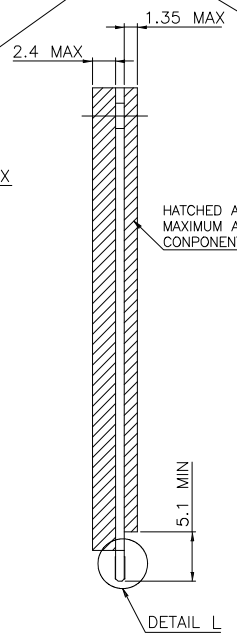
REV.	SPECIFICATION	ECN NO.	APPD.

F	G	
48.05	50.95	FULL-MINI CARD
23.9	26.8	HALF-MINI CARD



COMPONENT AND ROUTING (ALL LAYERS)  
KEEP OUT AREA FOR HOLD DOWN SOLUTIONS

PIN NUMBERING REFERENCE:  
ODD PINS-TOP SIDE  
EVEN PINS-BOTTOM SIDE



FOR PCI EXPRESS MINI CARD

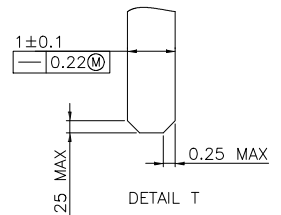
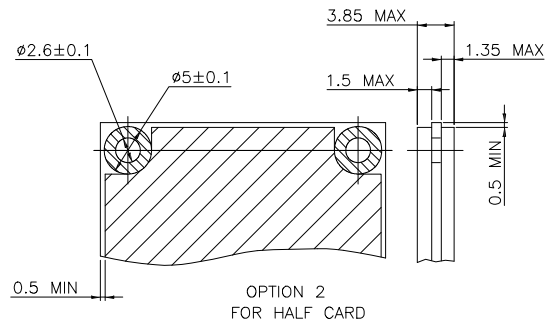
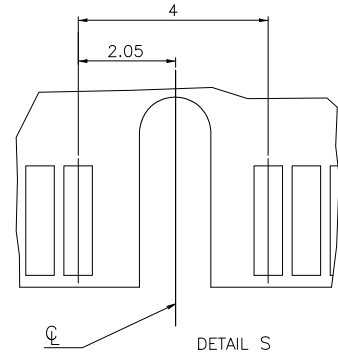
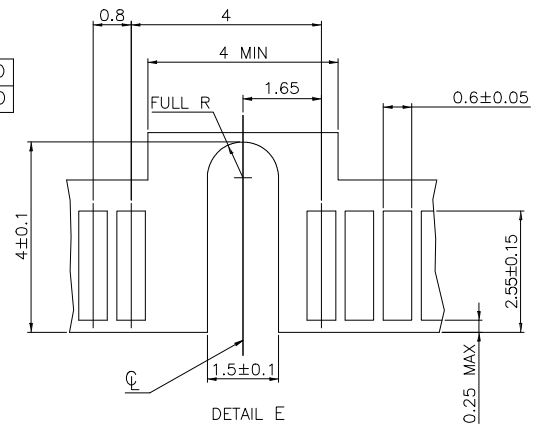
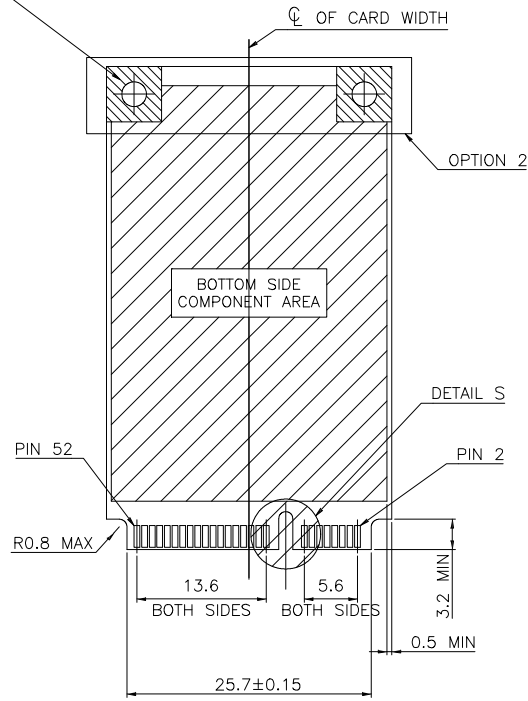
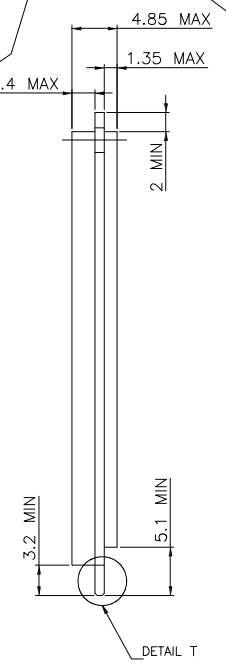
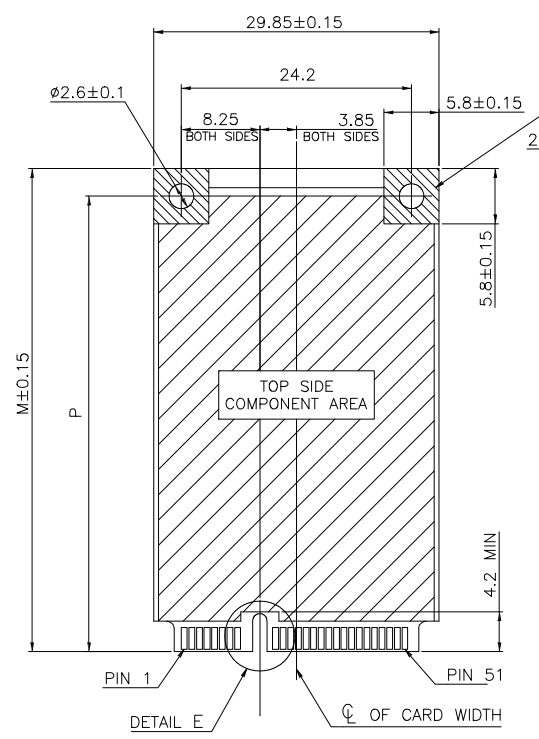
Tolerances	Dwg. No.	8402D01013	Title:	8402-A Series
x. = ±0.40	Projection	⊕ ↗	Unit	mm
.x = ±0.30	Scale	1:N	Drawn By	Martin 11/15'23
.xx = ±0.20				
.xxx = ±0.15				

Mini PCI Express H:5.60mm  
716

<b>OUPIN</b>			
OUPIN ELECTRONIC(KUNSHAN) CO., LTD.			
P/N: 8402-A52G00A3T			
SHEET	3/4	Ver.No.	A1

REV.	SPECIFICATION	ECN NO.	APPD.

P	M	
48.05	50.8	FULL CARD
23.9	26.8	HALF CARD



FOR mSATA

<b>Tolerances</b> x. = ±0.40 .x = ±0.30 .xx = ±0.20 .xxx = ±0.15	Dwg. No.	8402D01013	Title:	
	Projection	⊕ ↗	8402-A Series	
	Unit	mm	Scale	1:N
	Drawn By	Martin 11/15'23	Mini PCI Express H:5.60mm	

<b>OUPIIN</b>			
OUPIIN ELECTRONIC(KUNSHAN) CO., LTD.			
P/N: 8402-A52G00A3T			
SHEET	4/4	Ver.No.	A1

716