

| | | | |
|------|---------------|---------|-------|
| REV. | SPECIFICATION | ECN NO. | APPD. |
| X1 | | | |

Material and Plating:

Housing: LCP, 30% Glass Filled, UL94V-0, BLACK.

Power Contacts: High Conductivity Copper.
30u" Au+Pd/Ni on Contact Area and 80u" Min Tin Plated on Solder Tail over nickel 50u" Min under plated.

Electrical Characteristics:

Current Rating: 12.5 A(UL).

Dielectric Withstanding Voltage: DC 1000V For 1 minute.

Insulator Resistance: 5000MΩ min. at DC 500V.

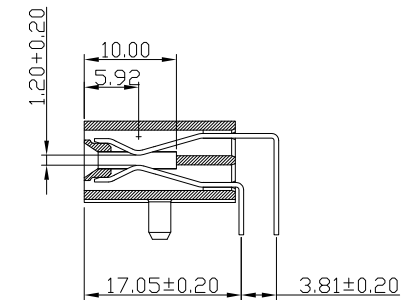
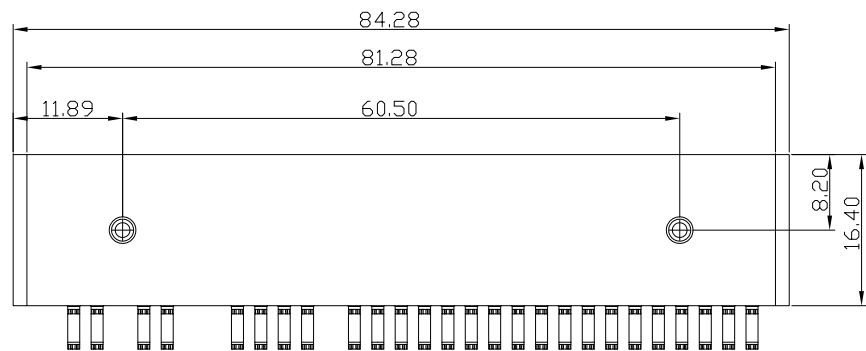
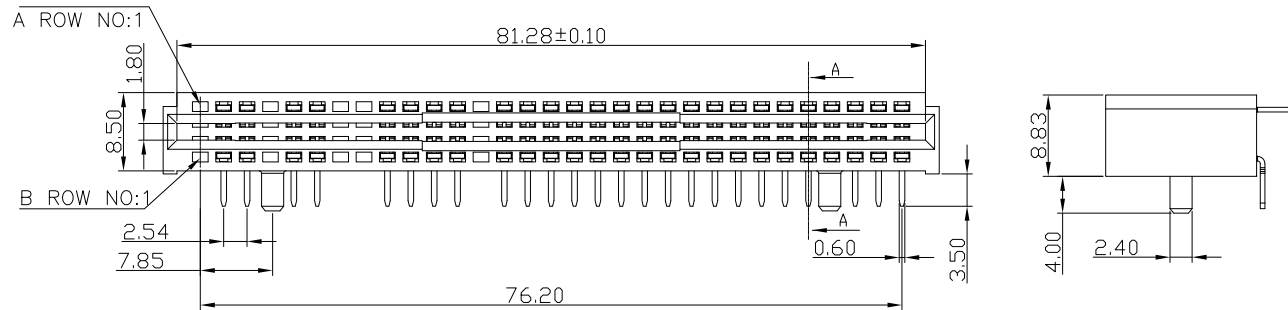
Contact Resistance: 10mΩ max. at DC 100mA.

Operating Temperature: -5°C ~ +105°C.

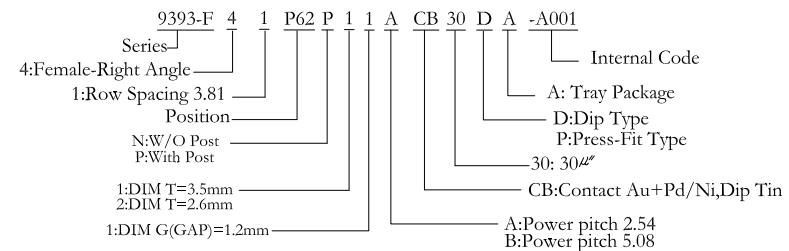
*RoHS Compliant

Note:

A, B Row P1, P4, P7, P8, P13 Without Contact.



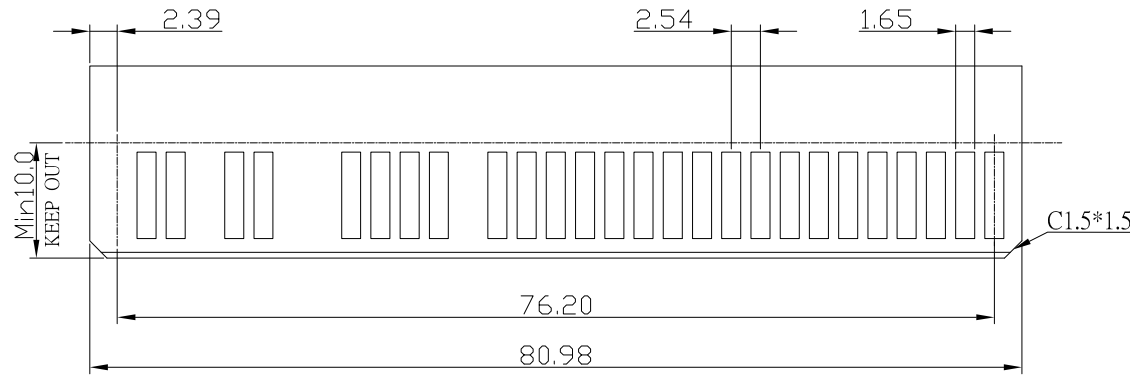
SECTION A-A



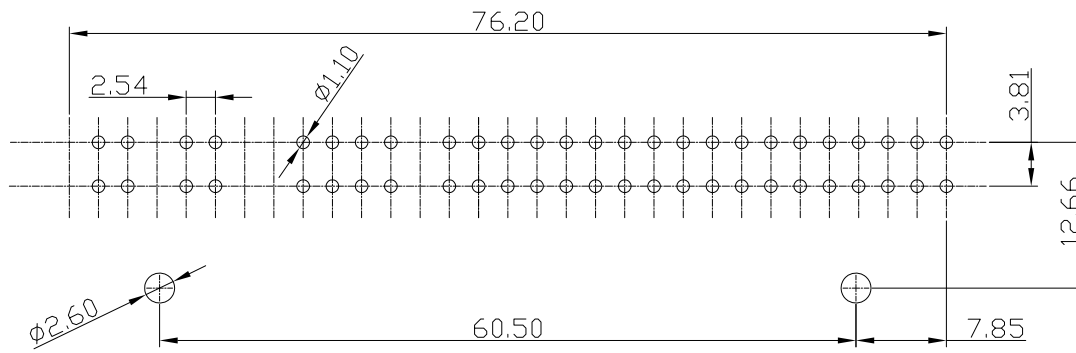
| | | | | |
|-------------|------------|----------------|----------------------|-----|
| Tolerances | Dwg. No. | 9393-D0000-026 | Title: | |
| x = ±0.5 | Projection | | 9393-F Series | |
| .x = ±0.25 | Unit | mm | Scale | 1:1 |
| .xx = ±0.15 | Drawn By | LQ06/20'16 | Power Edge Connector | |

| | | | |
|-------------------------------------|-----|----------|----|
| OUPIN | | | |
| OUPIN ELECTRONIC(KUNSHAN) CO., LTD. | | | |
| P/N: 9393-F41P62P11ACB30DA-A001 | | | |
| SHEET | 1/2 | Ver. No. | X1 |

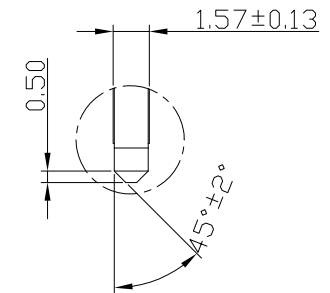
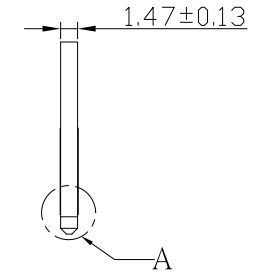
| | | | |
|------|---------------|---------|-------|
| REV. | SPECIFICATION | ECN NO. | APPD. |
| X1 | | | |



RECOMMENDED MATTING BOARD FOOTPRINT
(Tolerance: ± 0.05)



P.C. Board Layout
(Top View)
(Tolerance: ± 0.05)



DETAIL:A-A
SCALE :2:1

| | | | | | |
|------------------|------------|----------------|-------|---------------------------------------|-----|
| Tolerances | Dwg. No. | 9393-D0000-026 | | Title: | |
| x = ± 0.5 | Projection | | | 9393-F Series Power Edge Connector | |
| .x = ± 0.25 | Unit | mm | Scale | | 1:1 |
| .xx = ± 0.15 | Drawn By | LQ06/20'16 | | | |

| | | | |
|-------------------------------------|-----|----------|----|
| OUPIN | | | |
| OUPIN ELECTRONIC(KUNSHAN) CO., LTD. | | | |
| P/N: 9393-F41P62P11ACB30DA-A001 | | | |
| SHEET | 2/2 | Ver. No. | X1 |