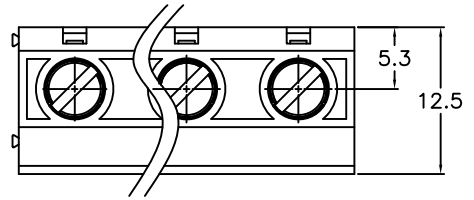
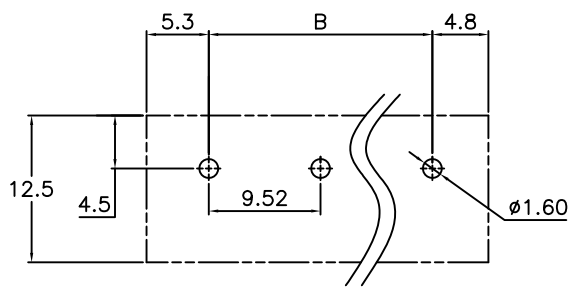
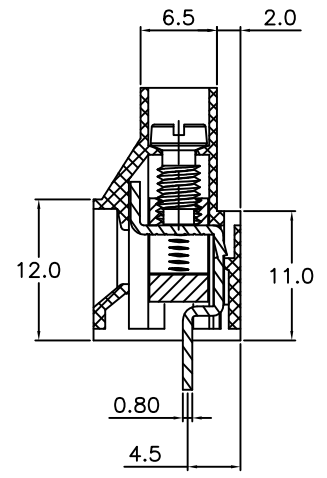
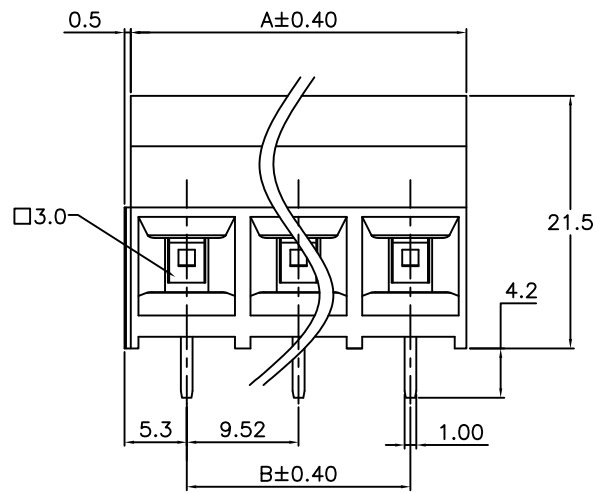


REV.	SPECIFICATION	ECN NO.	APPD.



Material:
Housing: Thermoplastic Polyester Glass Filled UL94V-0.
Solder Pin: Copper Alloy, Tin Plated.
Clamp: Copper Alloy, Ni Plated.
Screw: Metal, Zinc Plated, M3.5

Electrical Characteristics:
Voltage Rating: 300V AC.
Current Rating: 30A.
Solid Wire(AWG): 10-24.
Stranded Wire(AWG): 10-24.
Torque(Lb-In): 6.9 Lb-In.
Wire Strip Length: 6-7mm.
Withstanding Voltage: 1.6KV.
Operating Temperature: -40°C~+115°C.
***RoHS Compliant**



P.C. Board Layout

8932- V 125215 G AA xx S B
Series V:Pitch Manufacturing Code G:Green AA:Slotted No. of S:Straight B:Bulk
9.52mm Code B:Black "-"Screw Positions Package
Y:Grey U:Blue

Position	2 Thru 16
Dimension	
A	No. of PositionsX9.52
B	(No. of Positions-1)X9.52

Tolerances	Dwg. No.	8932D02018	Title:
x = ±0.50	Projection		8932 Series 9.52mm Terminal Block (8900-xxTS11-05)
.x = ±0.30	Unit	mm	
.xx = ±0.15	Scale	1:1	
	Drawn By	Vic Lyu01/07'15	① 780

OUPIN			
OUPIN ELECTRONIC(KUNSHAN) CO., LTD.			
P/N: 8932-V125215GAxxSB			
SHEET	1/1	Ver.No.	X1