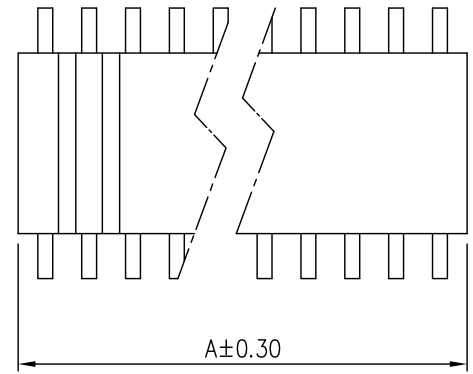


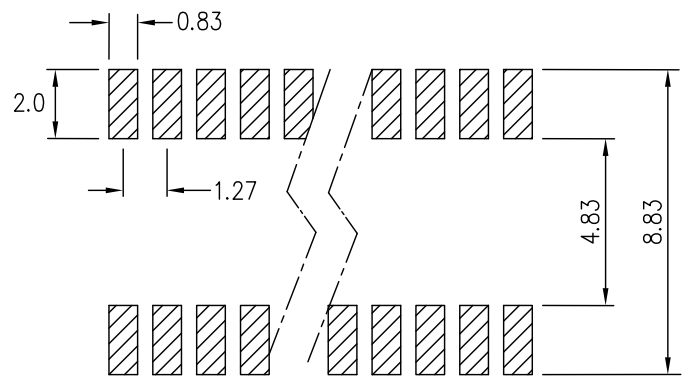
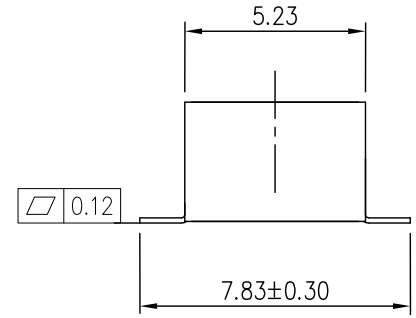
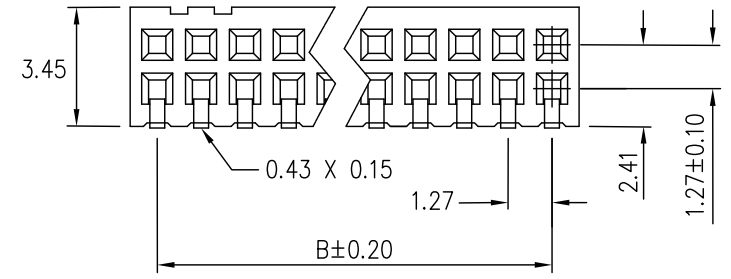
REV.	SPECIFICATION	ECN NO.	APPD.



Material:
Housing: LCP, UL94V-0.
Contacts: Phosphor Bronze, Gold Plated on Contact Area and Gold Flash or 80~160u" Tin Plated on solder tail over Nickel 50u".

Electrical Characteristics:
Current Rating: 1 AMP.
Dielectric Withstanding Voltage: AC 500V. for 1 minute.
Insulator Resistance: 1000MΩ min. at DC 500V.
Contact Resistance: 20mΩ max. at DC 100mA.
Operating Temperature: -40°C~+105°C .

***RoHS Compliant**
Insertion Depth: 2.20mm to 4.50mm.



P.C. Board Layout

2249- 2 X xx G 00 D U
Series Double Row No. of Pin Per Row G: Gold Plated C: Selective Gold Plated 00: G/F D: SMD Type U: Tube Package T: Tape&Reel Package

Position	4 Thru 80
Dimension	
A	1.27 X No. of Positions/2 +0.3
B	1.27 X No. of Positions/2 -1.27

Tolerances	Dwg. No.	2249D02003
x = ±0.50	Projection	
.x = ±0.25	Unit	mm
.xx = ±0.15	Scale	1:1
	Drawn By	bo-min9/21'18

Title:
2249 Series
P.C.B. Socket 1.27mm

OUPIIN ELECTRONIC(KUNSHAN) CO., LTD.			
P/N: 2249-2XxxG00DU			
SHEET	1/1	Ver.No.	A5