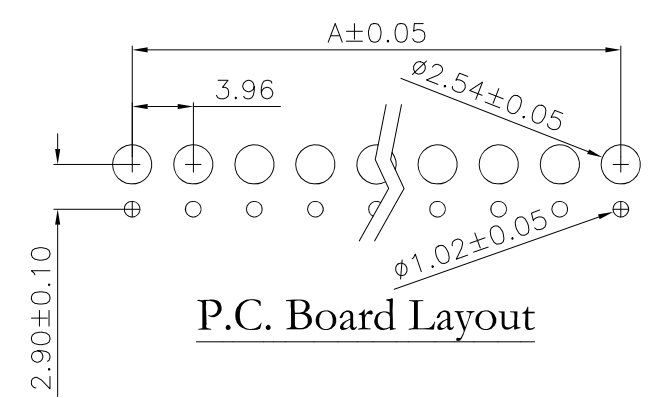
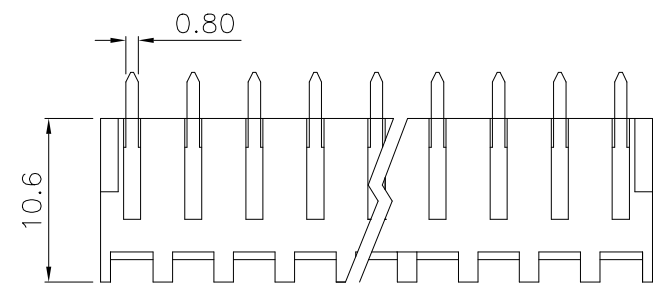
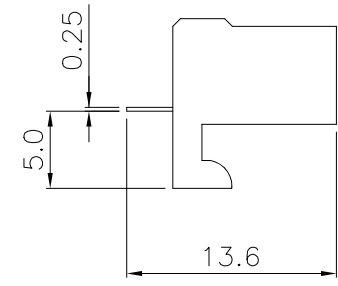
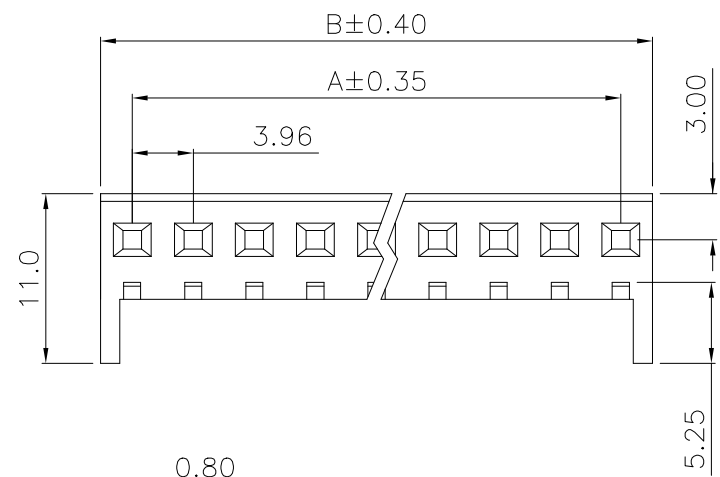


REV.	SPECIFICATION	ECN NO.	APPD.



**P.C. Board Layout**

**Material:**

Housing: Nylon66, UL94V-2, White.  
 Contacts: Brass.Gold Plated or 100~200u" Tin Plated over Nickel 30~50u".

**Electrical Characteristics:**

Current Rating: 5 AMP.  
 Voltage Rating: 250V AC Max.  
 Dielectric Withstanding Voltage: AC 1500V.  
 Insulator Resistance: 1000MΩ min.  
 Contact Resistance: 10mΩ max.  
 Operating Temperature: -40°C~+105°C.  
**\*RoHS Compliant**

Positions	Dimension	
	A	B
02	3.96	8.06
03	7.92	12.02
04	11.88	15.98
05	15.84	19.94
06	19.80	23.90
07	23.76	27.86
08	27.72	31.82
09	31.68	35.78
10	35.64	39.74
11	39.60	43.70
12	43.56	47.66
13	47.52	51.62
14	51.48	55.58
15	55.44	59.54
16	59.40	63.50

4773- xx x B A  
 Series ———  
 No. of Positions ———  
 T: Tin Plated ———  
 G00: Gold Flash ———  
 A: Tray Package  
 B: Bottom Entry Type

Tolerances .x = ±0.35 .xx = ±0.10	Dwg. No.	4773D02005	Title: 4773 Series	
	Projection		3.96mm PCB Connector	
	Unit	mm	Scale	1:N
	Drawn By	Martin 09/14'22	Bottom Entry	

<b>OUPIN</b>			
OUPIN ELECTRONIC(KUNSHAN) CO., LTD.			
P/N: 4773-xxxBA			
SHEET	1/1	Ver.No.	A3