

REV.	SPECIFICATION	ECN NO.	APPD.

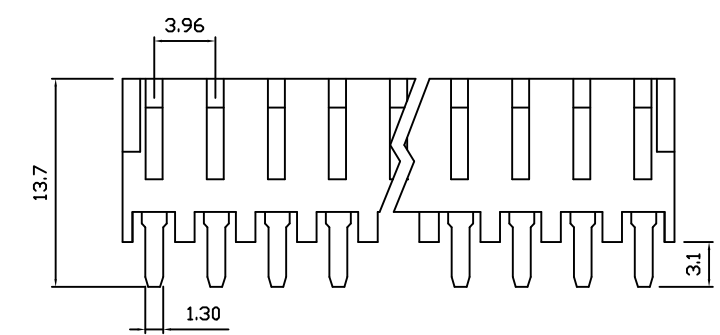
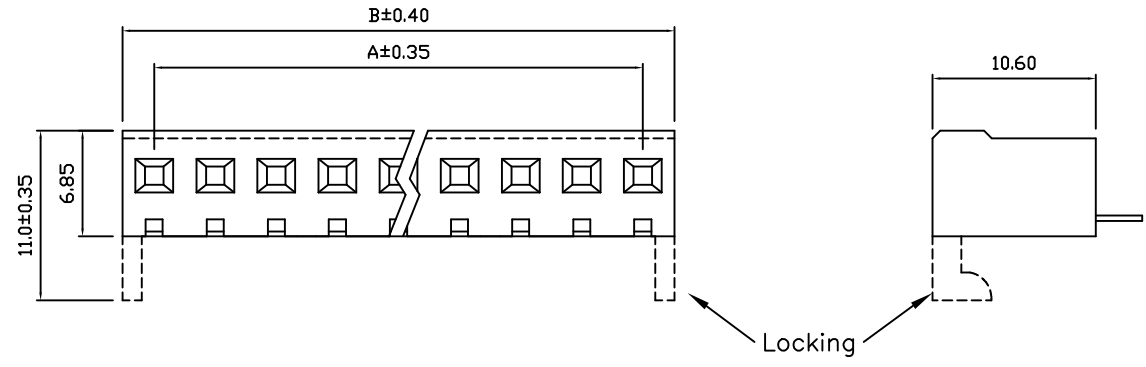
Material:

Housing: PA66, UL94V-2, White.
 Contacts: Brass, Tin Plated.

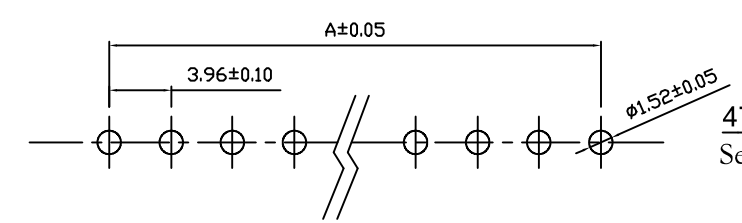
Electrical Characteristics:

Current Rating: 4 AMP.
 Voltage Rating: 250V AC Max.
 Dielectric Withstanding Voltage: AC 1000V.
 Insulator Resistance: 1000MΩ min.
 Contact Resistance: 10mΩ max.
 Operating Temperature: -40°C~+80°C.

***RoHS Compliant**



Dimension		
Positions	A	B
02	3.96	8.06
03	7.92	12.02
04	11.88	15.98
05	15.84	19.94
06	19.80	23.90
07	23.76	27.86
08	27.72	31.82
09	31.68	35.78
10	35.64	39.74
11	39.60	43.70
12	43.56	47.66
13	47.52	51.62
14	51.48	55.58
15	55.44	59.54
16	59.40	63.50



P.C. Board Layout

4773- xx T S x A
 Series No. of T: Tin S: Straight N: Without Locking A: Tray
 Position Plated Blank: With Locking Package

Tolerances	Dwg. No.	4773D02004
x = ±0.5	Projection	
.x = ±0.25	Unit	mm
.xx = ±0.15	Scale	1:1
	Drawn By	Martin 03/03'22

Title:
 4773 Series
 3.96mm Center P. C. Board
 Connector Straight Type

OUPIIN ELECTRONIC(KUNSHAN) CO., LTD.			
P/N: 4773-xxTSxA			
SHEET	1/1	Ver.No.	A7