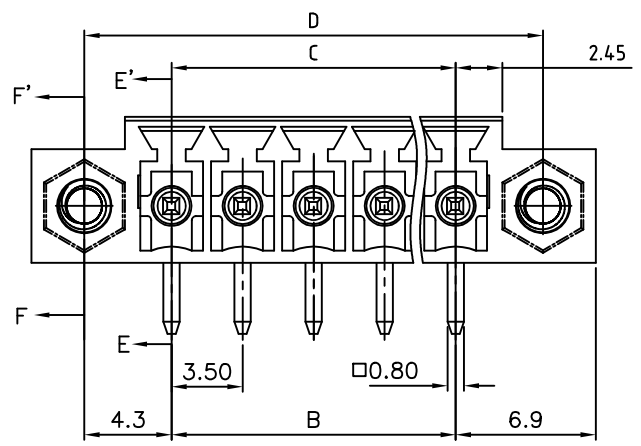


REV.	SPECIFICATION	ECN NO.	APPD.



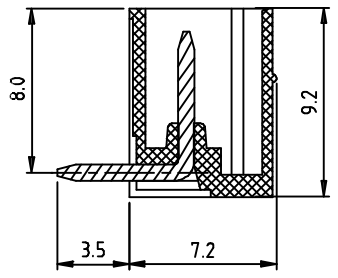
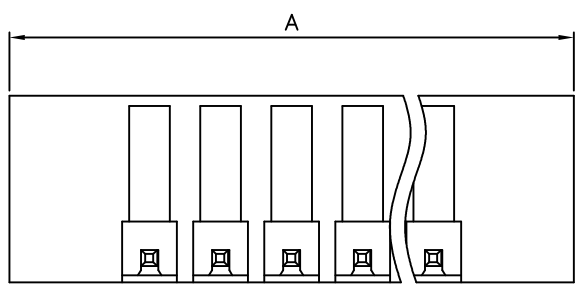
**Material:**

Housing: PA66 UL94V-0.  
 Contacts: Copper, Tin Plated.  
 Flange NUT: Brass, M2.5.

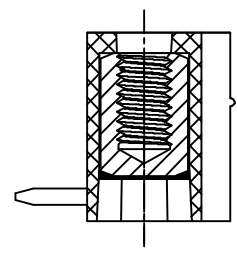
**Electrical Characteristics:**

Voltage Rating: 300V.  
 Current Rating: 10A.  
 Withstanding Voltage: 1.6KV.  
 Operating Temperature: -40°C~+115°C.

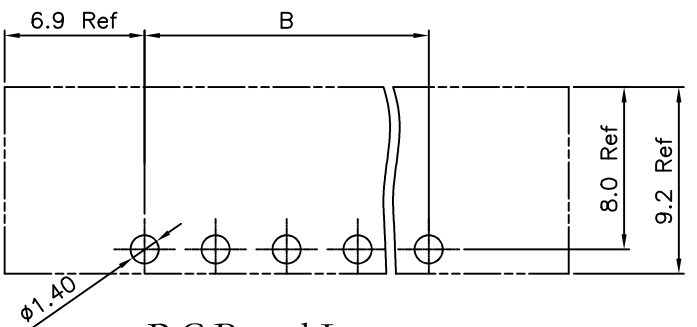
**\*RoHS Compliant**



Section E-E'



Section F-F'



P.C.Board Layout

**8930-** Series    **C** C:Pitch 3.5mm    **072092** Manufacturing Code    **G** G:Green B:Black Y:Grey U:Blue    **CA** CA:With Flange    **xx** No. of Positions    **R** R:Right Angle    **B** B:Bulk Package for 2~5Pos. Box Package for 6~24Pos.

	B/C	A/D	Positions	
02P	±0.10	±0.15		02 Thru 24
03P-06P	±0.15	±0.15	A	(No. of Positions-1)*3.5+13.8
07P-12P	±0.20	±0.20	B	(No. of Positions-1)*3.5
13P-16P	±0.25	±0.25	C	(No. of Positions-1)*3.5
17P-24P	±0.30	±0.30	D	(No. of Positions-1)*3.5+8.6

Tolerances	Dwg. No.	8930D01007	
x = ±0.50	Projection		
.x = ±0.30	Unit	mm	Scale 1:1
.xx = ±0.10	Drawn By	Jerry 10/31'19	

Title: 8930 Series  
 3.5mm Terminal Block  
 (8300-xxMTR11-03)  
 Right Angle Type With Flange  
 780

<b>OUPIN</b>			
OUPIN ELECTRONIC(KUNSHAN) CO., LTD.			
P/N: 8930-C072092GCAxxRB			
SHEET	1/1	Ver.No.	A6