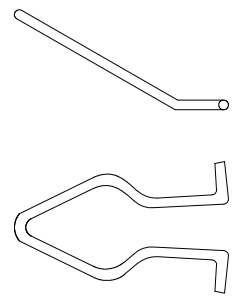
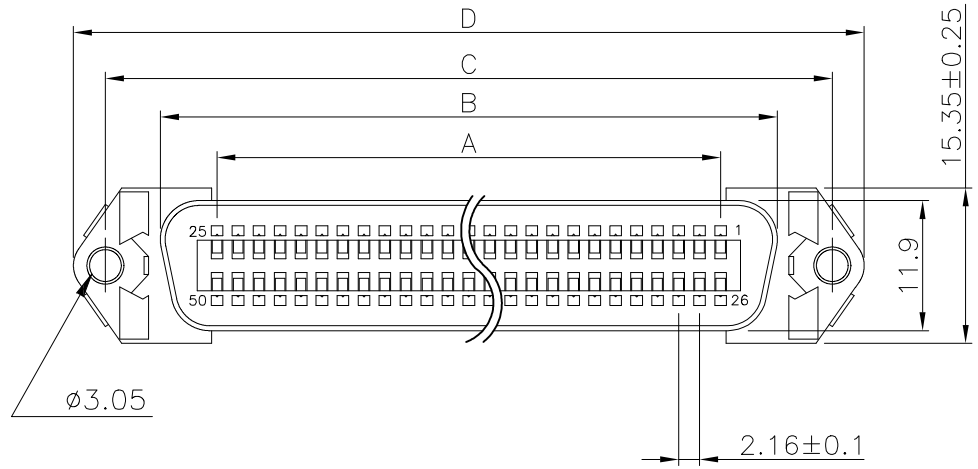
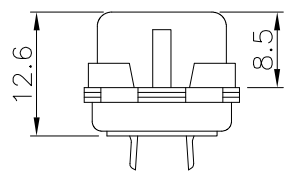
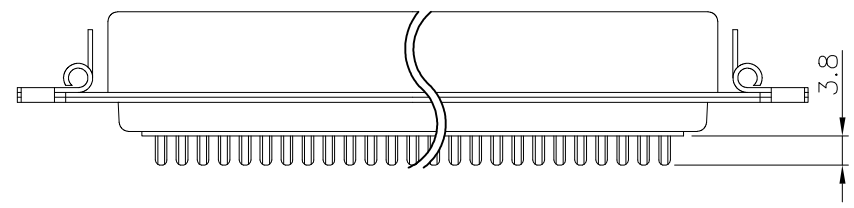


REV.	SPECIFICATION	ECN NO.	APPD.

Material:
Housing: PBT, UL94V-0, Blue.
Contacts: Brass, Gold Plated on Contact Area and Gold Flash on Solder Tail over Nickel 50u".
Shell: Steel, 80u" Nickel Plated over Copper 40u".
Electrical Characteristics:
Current Rating: 5 AMP.
Dielectric Withstanding Voltage: AC 1000V.
Insulation Resistance: 1000MΩ min.
Contact Resistance: 30mΩ max.
Operating Temperature: -55°C~+105°C.
***RoHS Compliant**



APPOSE SPRING LATCH
2PCS



Series 5974- 40 xx0 A
 40:Female
 A:Tray Package
 140:14Pin
 240:24Pin
 360:36Pin
 500:50Pin

Positions	A	B	C	D
14	12.96	25.2	36.0	44.1
24	23.76	36.0	46.8	55.0
36	36.72	48.9	59.7	68.0
50	51.84	64.1	74.9	83.0

Tolerances x. = ±0.40 .xx = ±0.30 .xxx = ±0.20	Dwg. No. 5974D02001	Title: 5974 Series		 OUPIIN ELECTRONIC(KUNSHAN) CO., LTD.	
	Projection	Centronic Connector			
	Unit mm	Scale 1:N	Solder Type		P/N: 5974-40xx0A
	Drawn By Martin 06/30'23	① 522	SHEET	1/1	Ver.No.