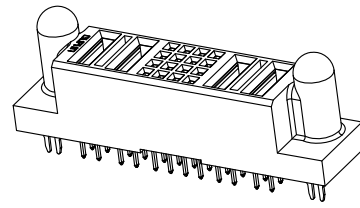
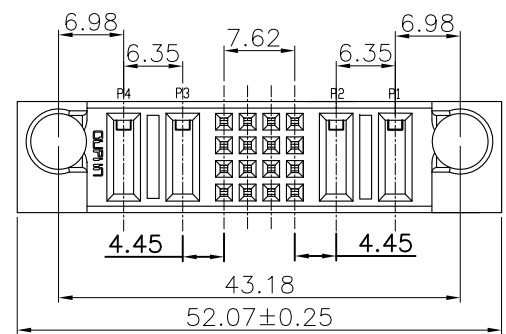


REV.	SPECIFICATION	ECN NO.	APPD.
X2			



Material:
Housing: High Temperature Plastic UL94V-0 .
Contacts: Copper Alloy
Lock: Copper Alloy

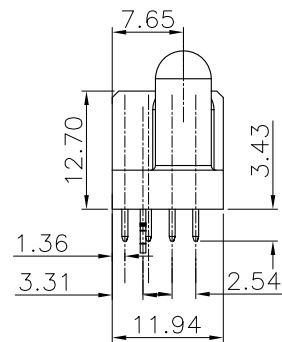
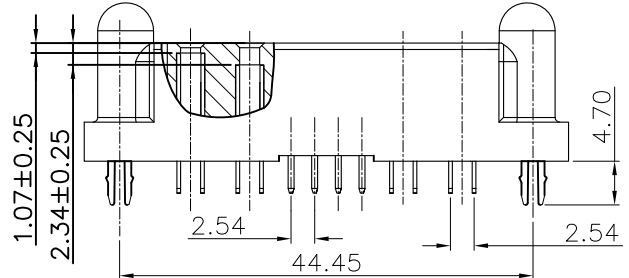
Electrical Characteristics:
Current Rating: Signal Pin 2.5 AMP.
Power Pin 30 AMP.

Dielectric Withstanding Voltage:
Signal Pin DC 1000V For 1 minute.
Power Pin DC 2500V For 1 minute.

Insulator Resistance: Signal Pin 5000MΩ min. at DC 500V.
Power Pin 20000MΩ min. at DC 500V.

Contact Resistance: Signal Pin 15mΩ max. at DC 20mA.
Power Pin 0.7mΩ max. at DC 20mA.

Operating Temperature: -40°C ~+105°C .

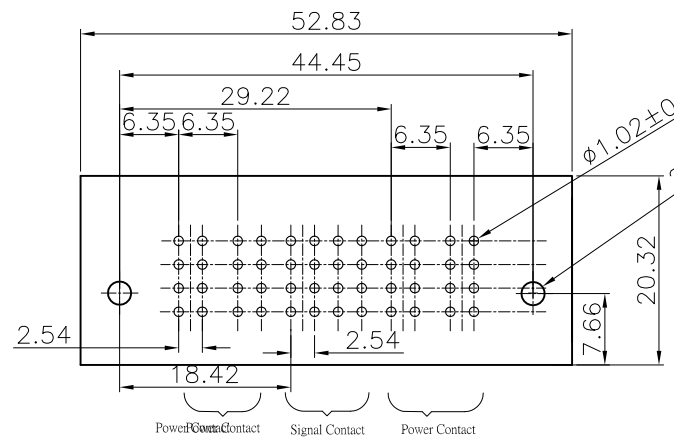


***RoHS Compliant**

Notes :
H: High density Power---PCB Mount 5.08mm Pitch
P: DC Power---PCB Mount 6.35mm Pitch
A: AC Power---PCB Mount 7.62mm Pitch
S: Signal---PCB Mount 2.54mm Pitch

ROWS		POWER		SIGNAL		POWER		
		P4	P3	4	3	2	1	
D				L	L	L	L	
C				L	L	L	L	
B				L	L	L	L	
A	HD	FS	FM	L	L	L	L	HD

POWER CONTACT TO THE TOP DISTANCE 2.34mm, THE MATING LENGTH 3.87mm	FM
POWER CONTACT TO THE TOP DISTANCE 1.07mm, THE MATING LENGTH 5.14mm	FS
SIGNAL CONTACT 3.43 SOLDER TAIL, PD/NI	L



9391-A 2 P02 S16 P02 CB 30 D L A -A001

Series: 2: Female Straight

Blank: Without Contact
Power Contact: Hxx, Pxx, Axx
No. of position

Blank: Without Contact
Signal Contact: S xx
No. of position

Blank: Without Contact
Power Contact: Hxx, Pxx, Axx
No. of position

Internal Code
A: Tray Package

L: With Lock
Blank: Without Lock

D: Dip Type
30:30u"

CB: Dip Tin Plated
Contact Au+Pd/Ni Plated

P.C.Board Layout
(Tolerance:±0.05)

Tolerances	Dwg. No.	9391-D0000-059		Title:	
x = ±0.5	Projection	⊕ ↗		9391 Series Female Straight Dip Type	
.x = ±0.25	Unit	mm	Scale		1:1
.xx = ±0.15	Drawn By	zbs 04/25'16			

OUPIN
OUPIN ELECTRONIC(KUNSHAN) CO., LTD.
P/N: 9391-A2P02S16P02CB30DLA-A001

SHEET	1/1	Ver. No.	X2
-------	-----	----------	----