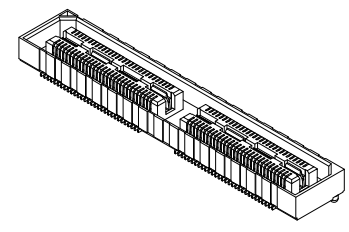
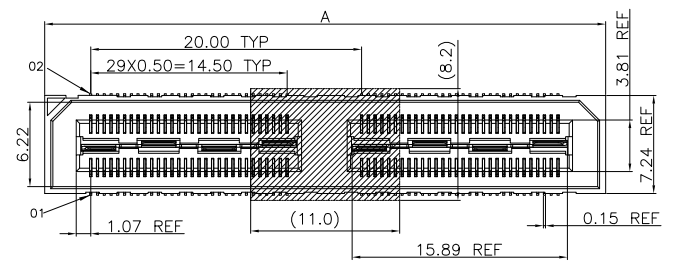


REV.	SPECIFICATION	ECN NO.	APPD.
R4		ECN240516	

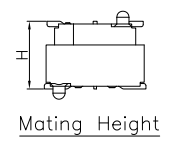
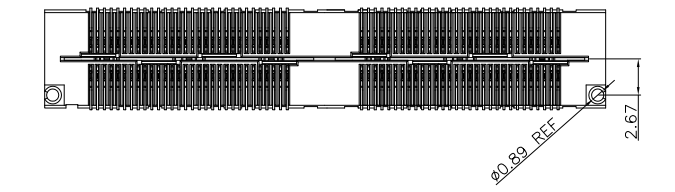
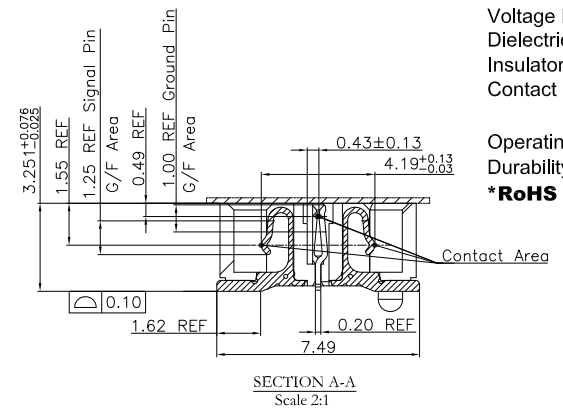
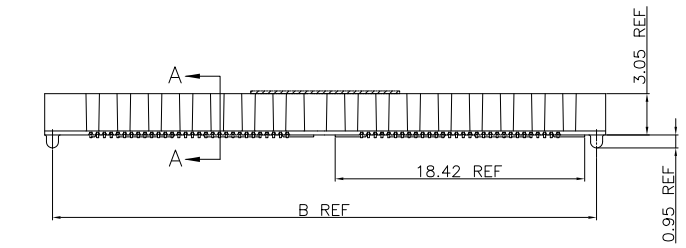


**Material and Plating:**

**Housing:** LCP, UL94V-0, Black.  
**Signal Contacts :** Phosphor Bronze.  
 Gold Plated on Contact Area and 80u" Min Tin Plated on Solder Tail over nickel 50u" Min .  
**Ground Contacts :** Phosphor Bronze.  
 Gold Plated on Contact Area and 80u" Min Tin Plated on Solder Tail over nickel 50u" Min .

**Electrical Characteristics:**

**Current Rating:** Signal: 3A Per Contact With 3 Adjacent Contacts (UL).  
 Ground: 25A Per Contact With 1 Contact.  
**Voltage Rating:** 125V AC .  
**Dielectric Withstanding Voltage:** 525V AC For 1 minute.  
**Insulator Resistance:** 5000MΩ min at DC 500V.  
**Contact Resistance:** Signal: 45mΩ max .  
 Ground: 15mΩ max .  
**Operating Temperature:** -55°C ~ +125°C .  
**Durability:** 250 Cycle .  
**\*RoHS Compliant**



2384-A xx F C x D P 1 N x x x -x

Series: S: Mylar, Blank Without Pad  
 Position: T: Tape & Reel Package, U: Tube Package, A: Tray Package  
 F: Female  
 C: Selective Gold Plated  
 2: 05u", 3: 10u"  
 D: SMD Type  
 N: W/O Post, P: With Post, P1: Up & Down Post and P

Blank: Without Friction lock  
 F: Friction lock  
 Blank: Without Guides  
 G: Guides Pin  
 N: W/O Lock, L: With Lock(Press Fit), L1: With Lock(Solder)  
 Code 1

Signaling (5mm Stack Height)	Speed Rating (No PCB Effect)
Single-Ended	9.5GHz/19Gbps
Differential	10.5GHz/21Gbps

Code:1~10 (A)	1	2	3	4	5	6	7	8	9	10
Male	4.267	7.267	10.267	15.243	18.240	21.237	24.237	29.238	13.269	14.270
Code:1	1	1	1	1	1	1	1	1	1	1
Female	3.25	3.25	3.25	3.25	3.25	3.25	3.25	3.25	3.25	3.25
Mating Height(H)	5.00	8.00	11.00	16.00	19.00	22.00	25.00	30.00	14.00	15.00

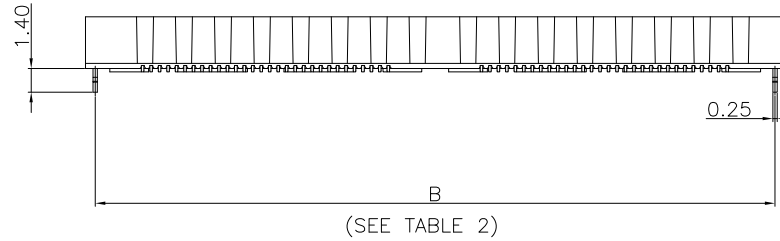
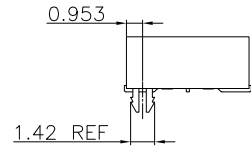
TABLE 2  
 "\*" Available Position

Code	Pos.	Dimension	
1		A	B
*	60	21.31	20.13
*	120	41.31	40.13

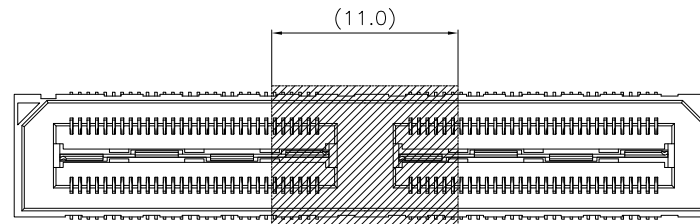
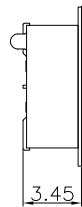
Tolerances	Dwg. No.	2384-D0000-011		Title:	
x = ±0.5	Projection			2384-A Series High Speed Board to Board Pitch 0.5mm(Socket)	
.x = ±0.25	Unit	mm	Scale		1:1
.xx = ±0.15	Drawn By	WP 05/11'24			

**OUPIN**  
 OUPIN ELECTRONIC(KUNSHAN) CO., LTD.  
 P/N: 2384-AxxFCxDP1Nxxx-x  
 SHEET 1/6 Ver. No. R4

REV.	SPECIFICATION	ECN NO.	APPD.
R4		ECN240516	



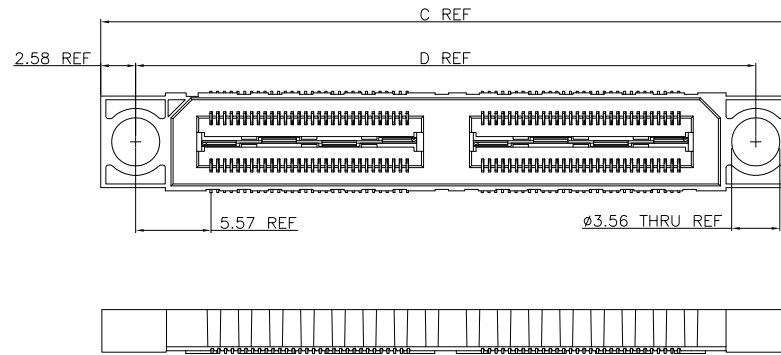
-L(With Lock)SAME AS SHEET 1 , EXCEPT AS SHOWN



-S:Mylar

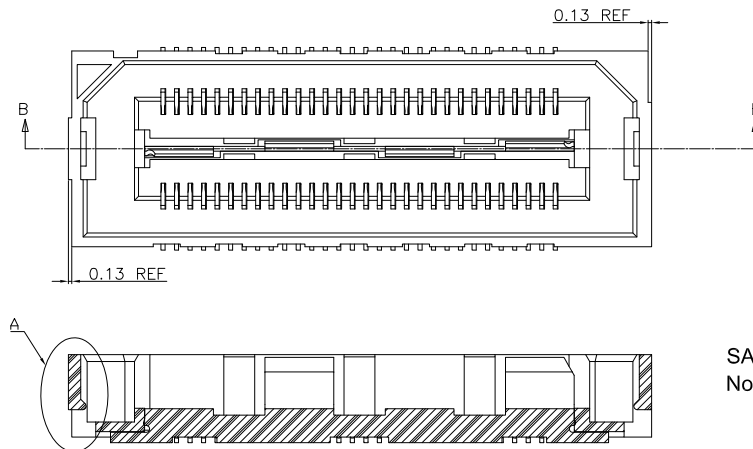
Tolerances	Dwg. No.	2384-D0000-011	Title:		 <b>OUPIIN ELECTRONIC(KUNSHAN) CO., LTD.</b> P/N: 2384-AxxFCxDP1Nxxx-x SHEET 2/6 Ver. No. R4			
x = ±0.5	Projection		2384-A Series					
.x = ±0.25	Unit	mm	Scale	1:1	High Speed Board to Board			
.xx = ±0.15	Drawn By	WP 05/11'24			Pitch 0.5mm(Socket)			

REV.	SPECIFICATION	ECN NO.	APPD.
R4		ECN240516	

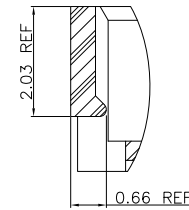


Pos.	Dimension	
	C	D
60	30.89	25.73
120	50.89	45.73

-G(Guides Pin) SAME AS SHEET 1, EXCEPT AS SHOWN



SECTION B-B  
SCALE 4:1

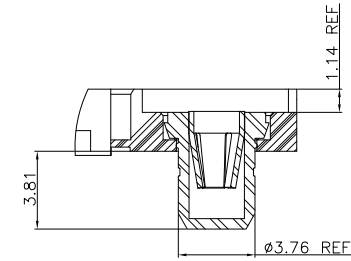
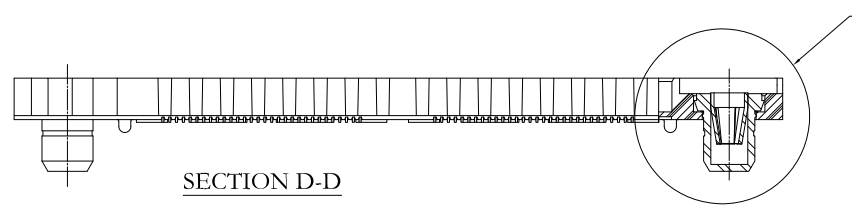
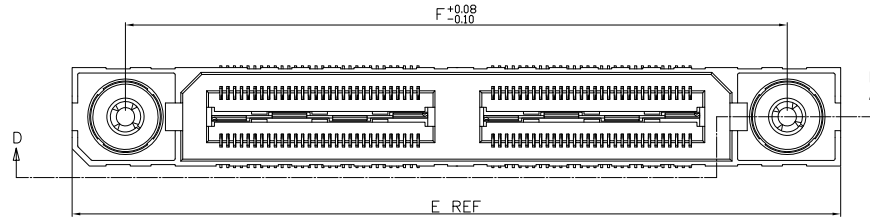


DETAIL A  
SCALE 8:1

-F(Friction Lock)  
SAME AS SHEET 1, EXCEPT AS SHOWN  
Not Available with -G(Guides Pin) Options

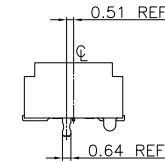
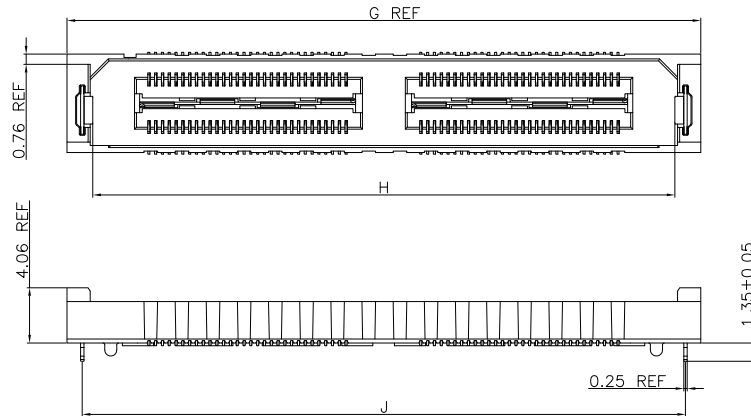
Tolerances	Dwg. No.	2384-D0000-011	Title:		 <b>OUPIIN ELECTRONIC(KUNSHAN) CO., LTD.</b>			
x = ±0.5	Projection		2384-A Series High Speed Board to Board Pitch 0.5mm(Socket)					
.x = ±0.25	Unit	mm			Scale	1:1		
.xx = ±0.15	Drawn By	WP 05/11'24			SHEET	3/6	Ver. No.	R4

REV.	SPECIFICATION	ECN NO.	APPD.
R4		ECN240516	



POS	E	F
60	36.51	28.66
120	56.52	48.67

-P1(Up & Down Post and P) SAME AS SHEET 1, EXCEPT AS SHOWN  
(FOR -P STYLE ONLY)  
(Not Available with -L,-G,or -F Options)



POS	G	H	J
60	26.61	22.78	24.36
120	46.61	42.78	44.36

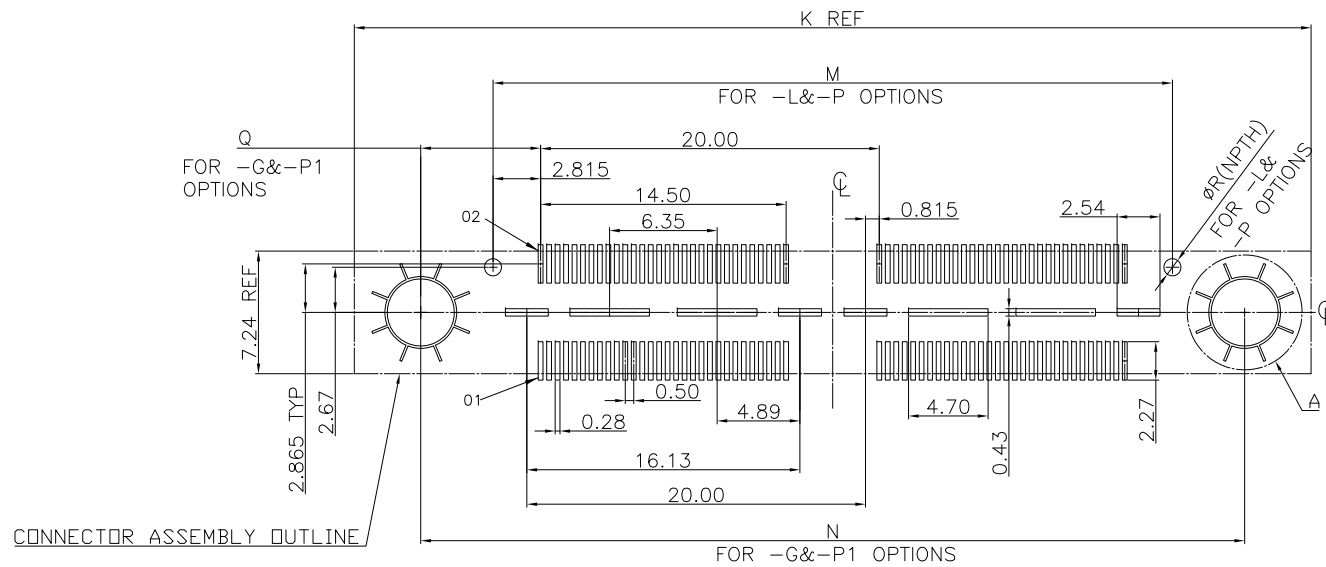
-L1(With Lock) SAME AS SHEET 1, EXCEPT AS SHOWN  
(Not Available with -L,-G,-F,or -P1 Options)

Tolerances	Dwg. No.	2384-D0000-011		Title:	
x = ±0.5	Projection			2384-A Series	
.x = ±0.25	Unit	mm	Scale	1:1	
.xx = ±0.15	Drawn By	WP 05/11'24		High Speed Board to Board Pitch 0.5mm(Socket)	

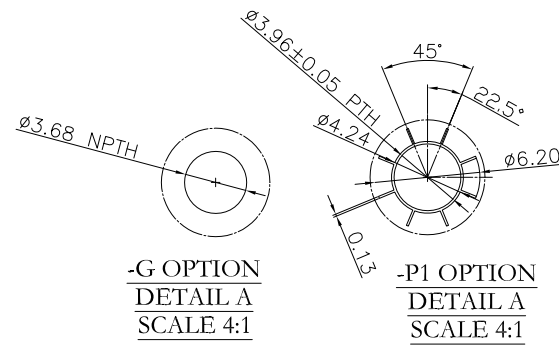
2384-A Series  
High Speed Board to Board  
Pitch 0.5mm(Socket)

<b>OUPIN</b>			
OUPIN ELECTRONIC(KUNSHAN) CO., LTD.			
P/N: 2384-AxxFCxDP1Nxxx-x			
SHEET	4/6	Ver. No.	R4

REV.	SPECIFICATION	ECN NO.	APPD.
R4		ECN240516	



CONNECTOR ASSEMBLY OUTLINE



**P.C.Board Layout**  
(Tolerance:±0.05)

OPTION	Q
-G	5.61
-P1	7.08

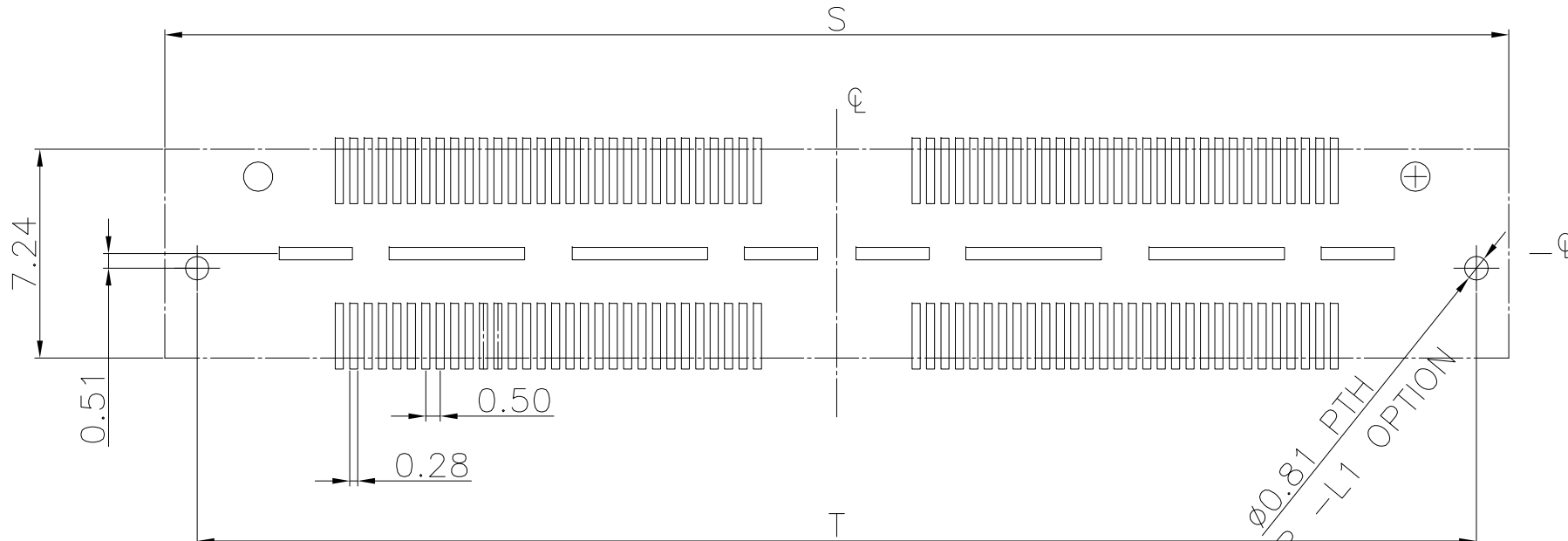
OPTION	R
-L	1.19
-P	1.02

POS	K			M		N	
	-L&P	-F	-G	-L&P	-G	-P1	
60	21.31	20.38	30.89	36.53	20.13	25.73	28.68
120	41.31	40.39	50.89	56.53	40.13	45.73	48.68

Tolerances	Dwg. No.	2384-D0000-011		Title:	
x = ±0.5	Projection			2384-A Series High Speed Board to Board Pitch 0.5mm(Socket)	
.x = ±0.25	Unit	mm	Scale		1:1
.xx = ±0.15	Drawn By	WP 05/11'24			

<b>OUPIIN ELECTRONIC(KUNSHAN) CO., LTD.</b>			
<b>P/N:</b> 2384-AxxFCxDP1Nxxx-x			
SHEET	5/6	Ver. No.	R4

REV.	SPECIFICATION	ECN NO.	APPD.
R4		ECN240516	



**P.C.Board Layout**  
(Tolerance:±0.05)

TABLE 9		
POS	S	T
60	26.62	24.36
120	46.62	44.36

Tolerances	Dwg. No.	2384-D0000-011		Title:	
x = ±0.5	Projection			2384-A Series High Speed Board to Board Pitch 0.5mm(Socket)	
.x = ±0.25	Unit	mm	Scale		1:1
.xx = ±0.15	Drawn By	WP 05/11'24			

<b>OUPIN</b>			
OUPIN ELECTRONIC(KUNSHAN) CO., LTD.			
P/N:		2384-AxxFCxDP1Nxxx-x	
SHEET	6/6	Ver. No.	R4