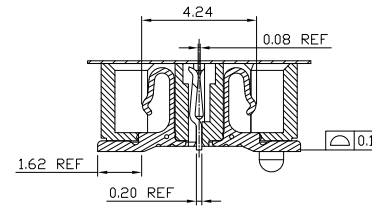
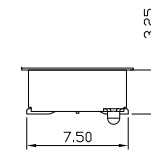
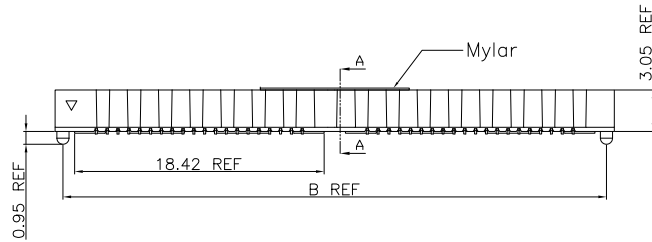
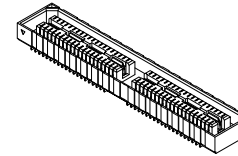
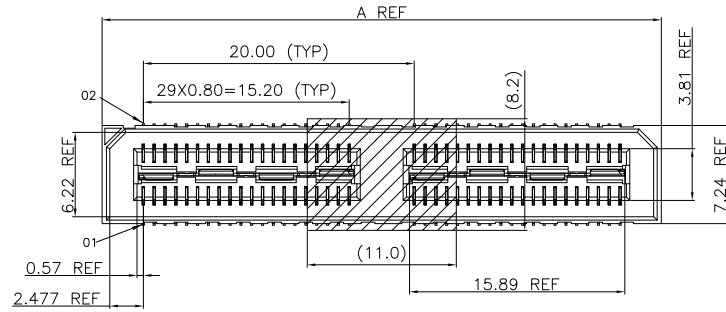
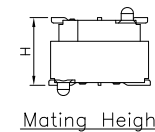


REV.	SPECIFICATION	ECN NO.	APPD.
R2		ECN240516	



Sectional A-A
Scale 2:1



Mating Height

Material and Plating:

Housing: LCP, UL94V-0, Black.
Signal Contacts: Phosphor Bronze.
 Gold Plated on Contact Area and 80u" Min Tin Plated on Solder Tail over nickel 50u" Min.
Ground Contacts: Phosphor Bronze.
 Gold Plated on Contact Area and 80u" Min Tin Plated on Solder Tail over nickel 50u" Min.

Electrical Characteristics:

Current Rating: Signal: 3A Per Contact With 3 Adjacent Contacts (UL).
 Ground: 25A Per Contact With 1 Contact.

Voltage Rating: 125V AC.
Dielectric Withstanding Voltage: 675V AC For 1 minute.
Insulator Resistance: 5000MΩ min at DC 500V.
Contact Resistance: Signal Pin: 45mΩ max.
 Ground Pin: 15mΩ max.

Operating Temperature: -55°C ~ +125°C.

***RoHS Compliant**

FIG 1
-P(With Post)

- 2384- xx F C x D P 1 N x x T -S
- Series
 - Position
 - F: Female
 - C: Selective Gold Plated
 - 1: G/F
 - 2: 05u"
 - 3: 10u"
 - 7: 30u"
 - D: SMD Type
 - N: W/O Lock
 - L: With Lock(Press Fit)
 - LI: With Lock(Solder)
 - Code 1
 - N: W/O Post
 - P: With Post
 - PI: Up & Down Post and P
 - S: Mylar
 - Blank: Without Pad
 - T: Tape & Reel Package
 - U: Tube Package
 - A: Tray Package
 - Blank: Without Friction lock
 - F: Friction lock
 - Blank: Without Guides
 - G: Guides Pin

5mm Stack Height	Rated@3dB Insertion Loss			
	With PCB effects	W/O PCB effects	9GHz / 18Gbps	14GHz / 28Gbps
Single-Ended Signaling	9GHz / 18Gbps	9GHz / 18Gbps	9GHz / 18Gbps	14GHz / 28Gbps
Differential Pair Signaling	8GHz / 16Gbps	14GHz / 28Gbps		

Code:1~10 (B)	1	2	3	4	5	6	7	8	9	10
Male	4.267	7.267	10.267	15.265	18.263	21.260	24.231	29.260	13.258	14.239
Female	3.25	3.25	3.25	3.25	3.25	3.25	3.25	3.25	3.25	3.25
Mating Height(H)	5.00	8.00	11.00	16.00	19.00	22.00	25.00	30.00	14.00	15.00

TABLE 2

"*"Available Position			
Code	Pos.	Dimension	
H1		A	B
	40	21.27	20.13
*	80	41.28	40.13

Tolerances	Dwg. No.	2384-D0000-001		Title:	2384 Series High Speed Board to Board Pitch 0.8mm(Socket)					
x = ±0.5	Projection			 OUPIIN ELECTRONIC(KUNSHAN) CO., LTD. P/N: 2384-xxFCxDP1NxxT-S SHEET 1/6 Ver. No. R2						
.x = ±0.25	Unit	mm	Scale							1:1
.xx = ±0.15	Drawn By	WP 05/11'24								

REV.	SPECIFICATION	ECN NO.	APPD.
R2		ECN240516	

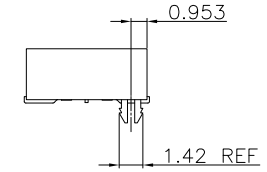
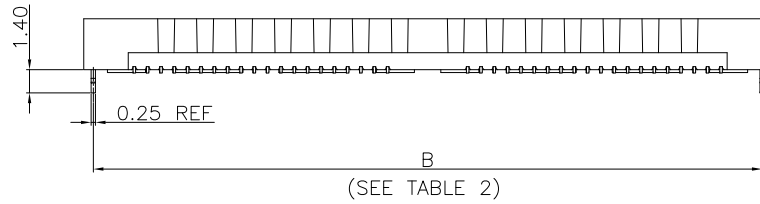


FIG 2
-L(With Lock)
(DIFFERENT AS SHOWN, OTHERWISE SAME AS FIG 1)

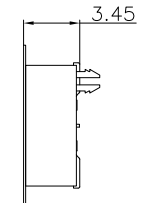
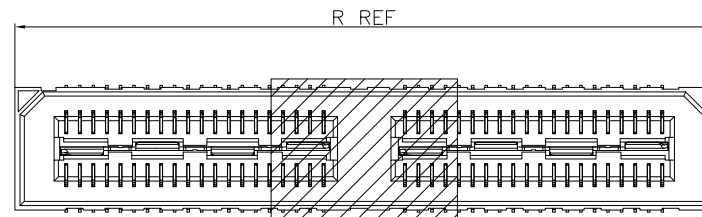
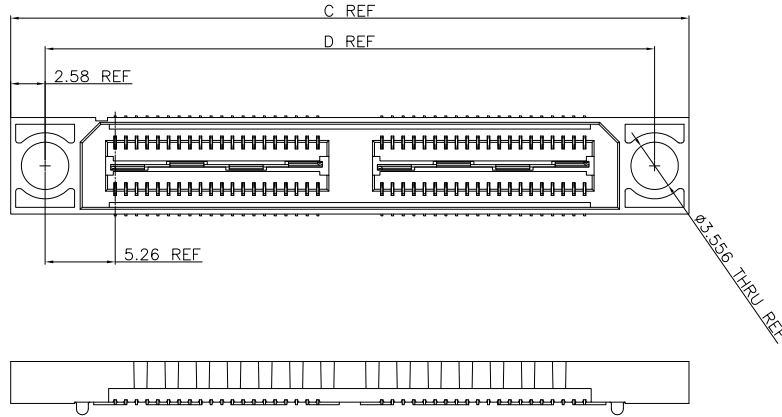


FIG 3
-S(With Mylar)

Tolerances	Dwg. No.	2384-D0000-001		Title:	
x = ±0.5	Projection	⊕ ↙		2384 Series	
.x = ±0.25	Unit	mm	Scale	1:1	
.xx = ±0.15	Drawn By	WP 05/11'24		High Speed Board to Board Pitch 0.8mm(Socket)	

OUPIN			
OUPIN ELECTRONIC(KUNSHAN) CO., LTD.			
P/N: 2384-xxFCxDP1NxxT-S			
SHEET	2/6	Ver. No.	R2

REV.	SPECIFICATION	ECN NO.	APPD.
R2		ECN240516	



Pos.	Dimension	
	C	D
40	30.89	25.72
80	50.89	45.72

FIG 4
-G(Guides Pin)
(DIFFERENT AS SHOWN, OTHERWISE SAME AS FIG 1)
(80 PIN MAX WITH T & R PACKAGING)

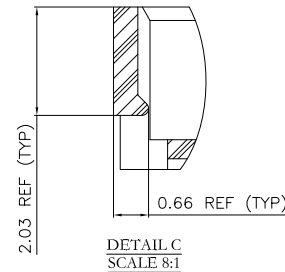
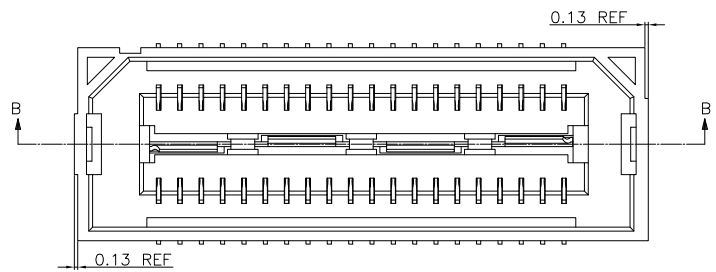

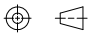
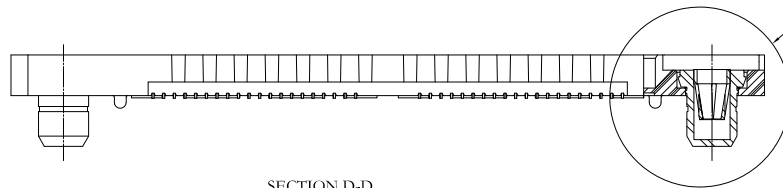
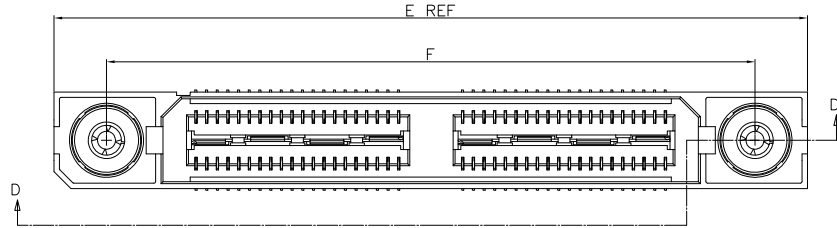


FIG 5
-F(Friction Lock)
(DIFFERENT AS SHOWN, OTHERWISE SAME AS FIG 1)
(Not Available with -G(Guides Pin) Options)

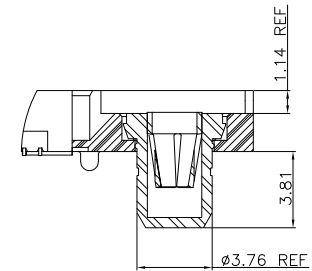
SECTION B-B
SCALE 4:1

Tolerances	Dwg. No.	2384-D0000-001	Title:		 OUPIIN ELECTRONIC(KUNSHAN) CO., LTD. P/N: 2384-xxFCxDP1NxxT-S
x = ±0.5	Projection		2384 Series		
.x = ±0.25	Unit	mm	Scale	1:1	SHEET
.xx = ±0.15	Drawn By	WP 05/11'24	High Speed Board to Board Pitch 0.8mm(Socket)		3/6
					Ver. No.
					R2

REV.	SPECIFICATION	ECN NO.	APPD.
R2		ECN240516	



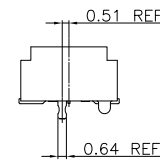
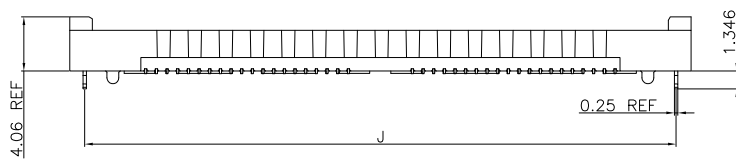
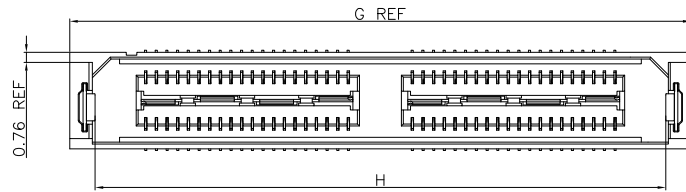
SECTION D-D



DETAIL E
SCALE 3:1

POS	E	F
40	36.51	28.66
80	56.52	48.67

FIG6
-P1(Up & Down Post and P)
(DIFFERENT AS SHOWN, OTHERWISE SAME AS FIG 1)
(MUST USE -P OPTION)
(Not Available with -L,-G, or -F Options)
(Not Available With -200 PIN)



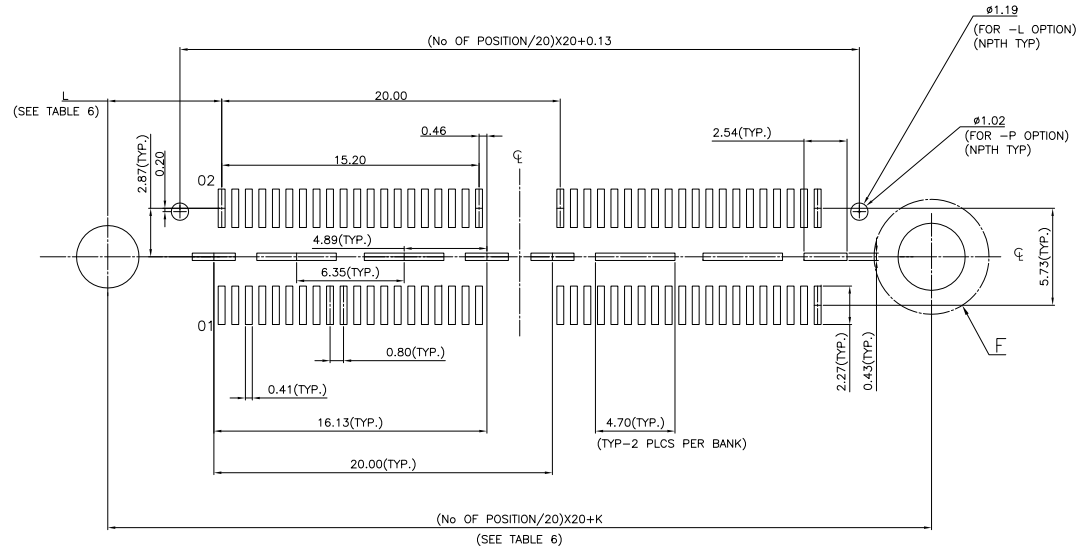
POS	G	H	J
40	26.61	22.78	24.36
80	46.61	42.78	44.36

FIG7
-L1(With Lock)
(DIFFERENT AS SHOWN, OTHERWISE SAME AS FIG 1)
(MUST USE -P OPTION) (80 PIN MAX)
(Not Available with -L, -G, -F, or -P1 Options)

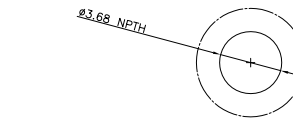
Tolerances	Dwg. No.	2384-D0000-001		Title:	
x = ±0.5	Projection			2384 Series	
.x = ±0.25	Unit	mm	Scale	1:1	High Speed Board to Board
.xx = ±0.15	Drawn By	WP 05/11'24			Pitch 0.8mm(Socket)

OUPIN			
OUPIN ELECTRONIC(KUNSHAN) CO., LTD.			
P/N: 2384-xxFCxDP1NxxT-S			
SHEET	4/6	Ver. No.	R2

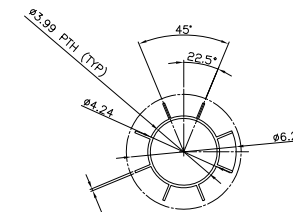
REV.	SPECIFICATION	ECN NO.	APPD.
R2		ECN240516	



P.C.Board Layout
(Tolerance:±0.05)



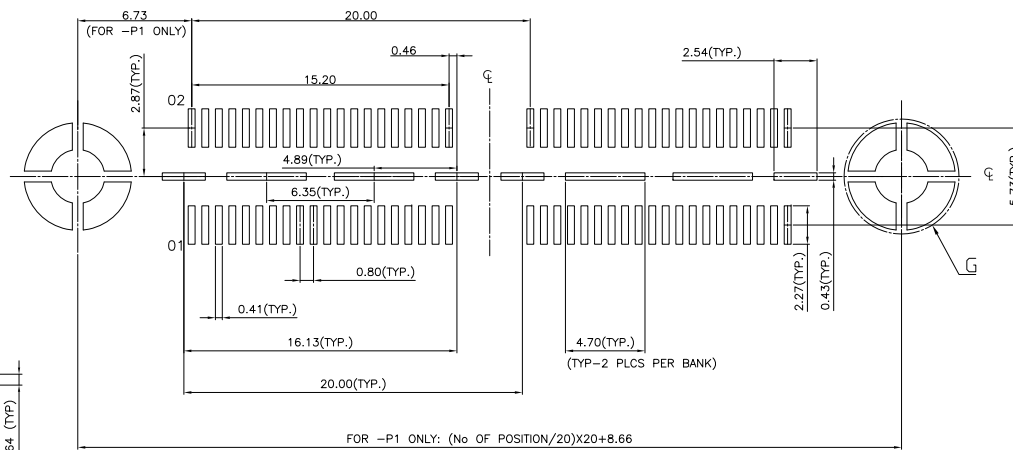
-G OPTION
DETAIL F
SCALE 6:1



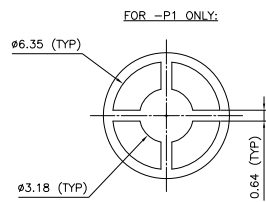
-P1 OPTION
DETAIL F
SCALE 6:1

OPTION	K	L
-G	5.715	5.258
-P1	8.661	6.731

NOTE:
STENCIL TO BE 1.52 THICK.



P.C.Board Layout
(Tolerance:±0.05)



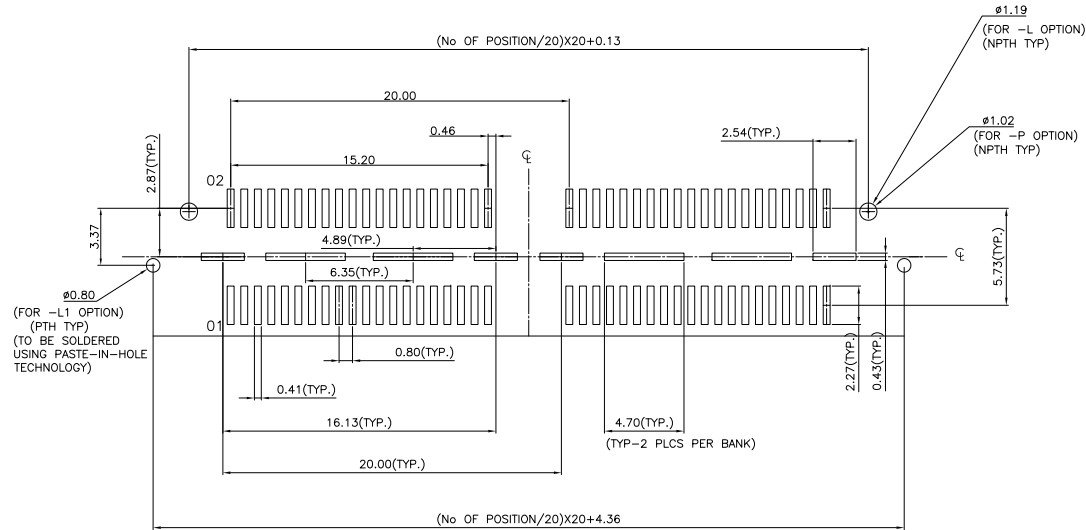
DETAIL G
SCALE 6:1

Tolerances	Dwg. No.	2384-D0000-001		Title:	
x = ±0.5	Projection			2384 Series	
.x = ±0.25	Unit	mm	Scale	High Speed Board to Board	
.xx = ±0.15	Drawn By	WP 05/11'24	1:1	Pitch 0.8mm(Socket)	

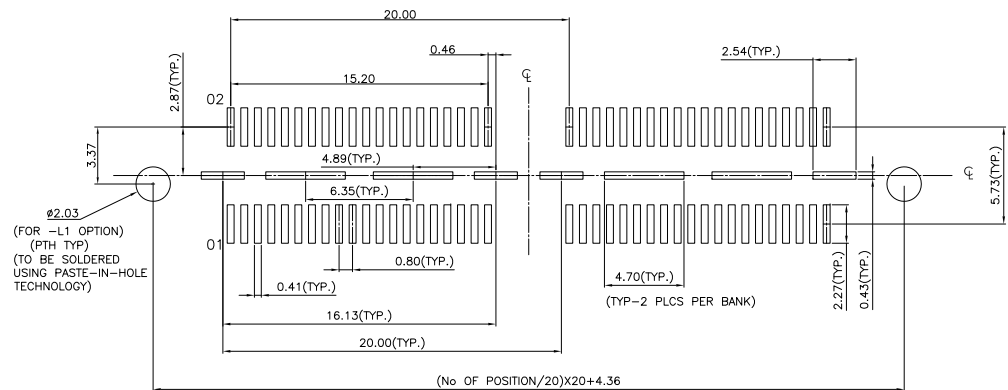
2384 Series
High Speed Board to Board
Pitch 0.8mm(Socket)

OUPIN			
OUPIN ELECTRONIC(KUNSHAN) CO., LTD.			
P/N: 2384-xxFCxDP1NxxT-S			
SHEET	5/6	Ver. No.	R2

REV.	SPECIFICATION	ECN NO.	APPD.
R2		ECN240516	


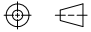


P.C.Board Layout For -L1 Option
(Tolerance:±0.05)



P.C.Board Layout For -L1 Option
(Tolerance:±0.05)

NOTE:
STENCIL TO BE 1.52 THICK.

Tolerances	Dwg. No.	2384-D0000-001	Title:		 OUPIN ELECTRONIC(KUNSHAN) CO., LTD. P/N: 2384-xxFCxDP1NxxT-S
x = ±0.5	Projection		2384 Series		
.x = ±0.25	Unit	mm	Scale	1:1	
.xx = ±0.15	Drawn By	WP 05/11'24	High Speed Board to Board Pitch 0.8mm(Socket)		SHEET
					6/6
					Ver. No.
					R2