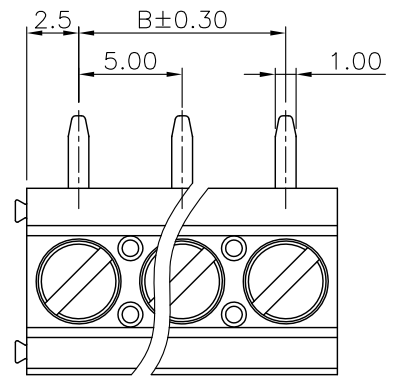
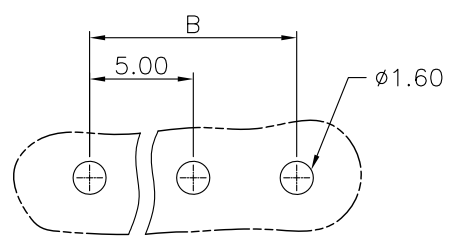
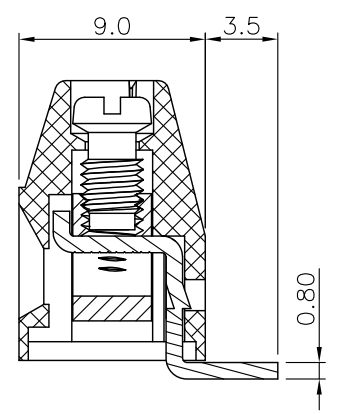
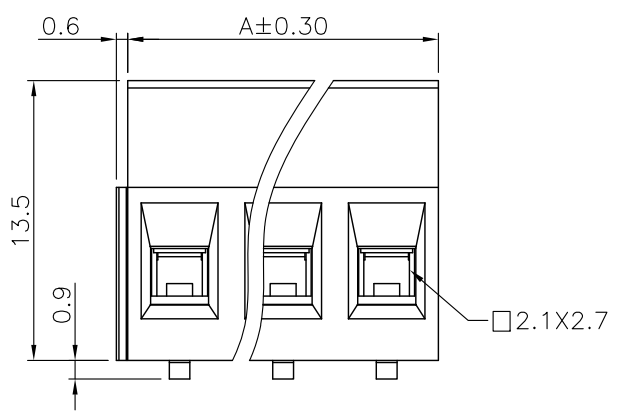


REV.	SPECIFICATION	ECN NO.	APPD.



**Material:**  
Housing: PA66, UL94V-0.  
Solder Pin: Brass, Tin Plated.  
Clamp: Brass, Ni Plated.  
Screw: Steel, Zinc Plated, M3.  
**Electrical Characteristics:**  
Voltage Rating: 300V.  
Current Rating: 16A.  
Solid Wire(AWG): 12-28.  
Stranded Wire(AWG): 12-28.  
Torque: 3.5Lb-In.  
Wire Strip Length: 6-7mm.  
Withstanding Voltage: 1.6KV.  
Operating Temperature: -40°C~+115°C.  
**\*RoHS Compliant**



P.C. Board Layout

8932- F 090135 G AA xx R A  
Series — F:Pitch 5.0mm — Manufacturing Code — G:Green — A:Trasy Package — R:Right Angle — No. of Positions — AA:Slotted "-"Screw

Position	2 Thru 24
Dimension	
A	No. of PositionsX5.0
B	(No. of Positions-1)X5.0

Tolerances	Dwg. No.	8932D02010	Title:	
x = ±0.50	Projection		8932 Series	
.x = ±0.25	Unit	mm	Scale	1:1
.xx = ±0.15	Drawn By	Polly 12/27'17	5.0mm Terminal Block	

① 780

OUPIIN ELECTRONIC(KUNSHAN) CO., LTD.			
P/N: 8932-F090135GAxxRA			
SHEET	1/1	Ver.No.	A1