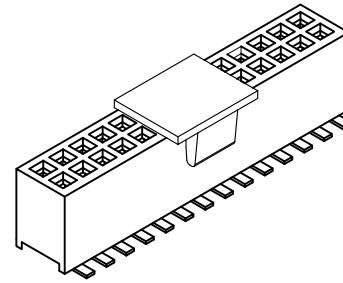
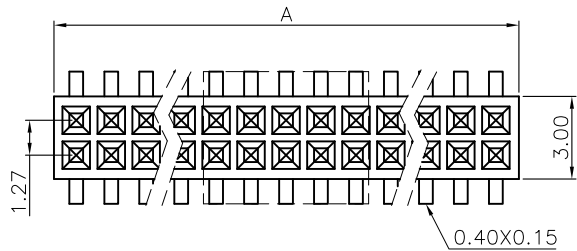


REV.	SPECIFICATION	ECN NO.	APPD.
R10		ECN211028	



Material and Plating:

Housing: LCP,UL94V-0, BLACK.

Signal Contacts : Phosphor Bronze.

Gold Plated on Contact Area and 80u" Min Tin or Gold Flash
Plated on Solder Tail over 50u" Min Nickel.

Electrical Characteristics:

Current Rating: 1 AMP.

Dielectric Withstanding Voltage: AC 500V for 1 minute.

Insulator Resistance: 1000MΩ min. at DC 500V.

Contact Resistance: 20mΩ max. at DC 100mA.

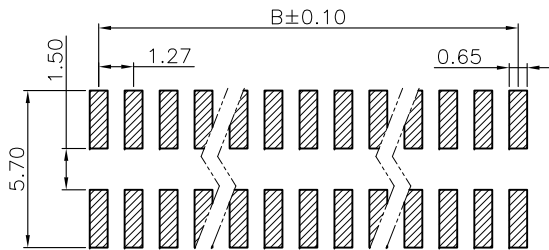
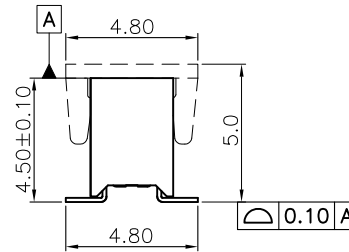
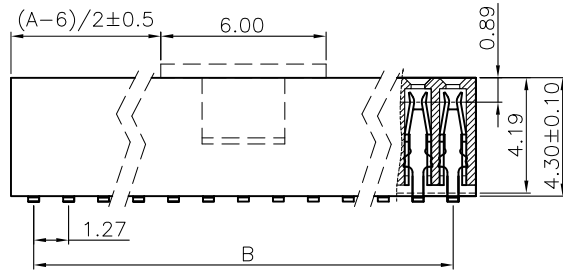
Operating Temperature: -65°C~+125°C.

***RoHS Compliant**

Notes:

Contact Length: 4.19mm.

Insertion Depth: 2.00mm to 3.00mm



P.C.Board Layout
(Tolerance: ±0.05mm)

2242- 2 X xx C xx D T -x
 Series
 Double Row
 No.of Pin Per Row
 C: Selective Gold Plated
 G: Gold Plated
 00: G/F
 10: 10μ"
 15: 15μ"
 30: 30μ"
 Blank: W/O Pad
 P: Plastic Pad
 M: Metal Pad
 T: Tape & Reel Package
 U: Tube Package
 D: SMD Type

Available Position	Dimension	
	A	B
10	6.75	5.08
12	8.02	6.35
14	9.29	7.62
16	10.56	8.89
18	11.83	10.16
20	13.10	11.43
24	15.64	13.97
30	19.45	17.78
32	20.72	19.05
36	23.26	21.59
40	25.80	24.13
50	32.15	30.48
60	38.50	36.83
80	51.20	49.53
100	63.90	62.23

Tolerances	Dwg. No.	2242D02001
x = ±0.50	Projection	
.x = ±0.25	Unit	mm
.xx = ±0.15	Scale	1:1
	Drawn By	ZY 10/19'21

Title: 2242 Series
P.C.B. Socket
1.27mmX1.27mm

OUPIIN ELECTRONIC(KUNSHAN) CO., LTD.			
P/N: 2242-2XxxCxxDT-x			
SHEET	1/1	Ver.No.	R10