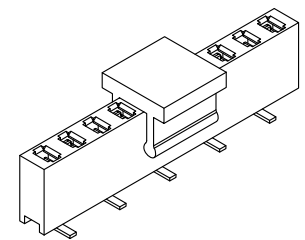


REV.	SPECIFICATION	ECN NO.	APPD.
R4		ECN120820	



Material:

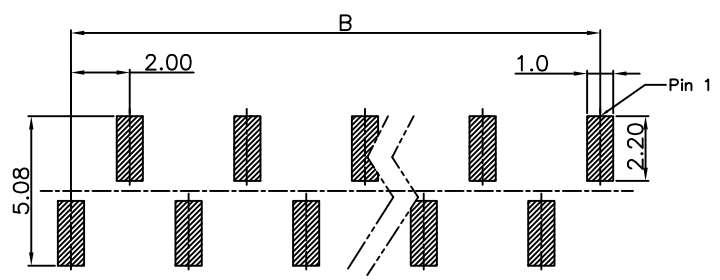
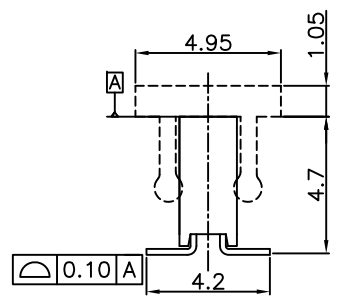
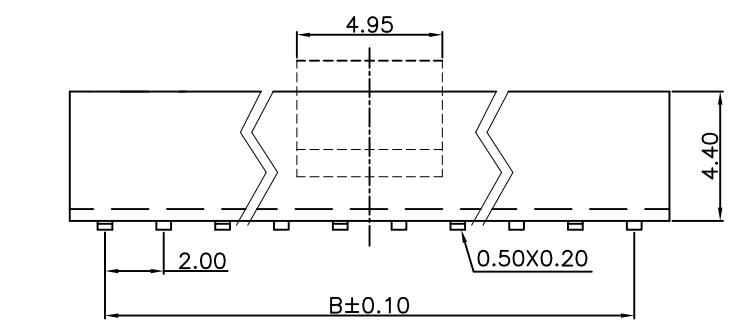
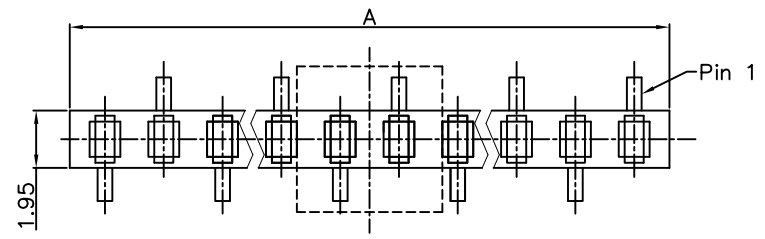
Housing: High Temperature Plastic UL94V-0.
 Contacts: Copper Alloy.

Electrical Characteristics:

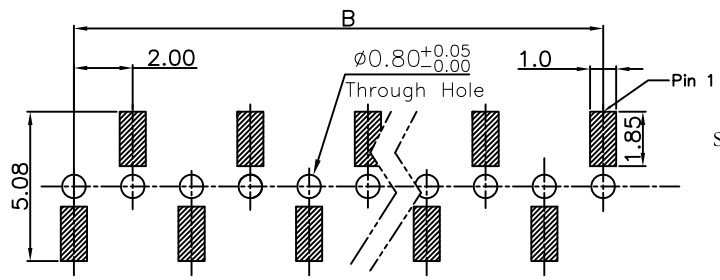
Current Rating: 1 AMP.
 Dielectric Withstanding Voltage: AC 500V For 1 minute.
 Insulator Resistance: 1000MΩ min. at DC 500V.
 Contact Resistance: 20mΩ max. at DC 100mA.
 Operating Temperature: -65°C~+125°C .

***RoHS Compliant**

Insertion Depth: 2.20mm to 4.35mm.
 Bottom Entry Insertion Depth: 4.40mm min.
 (Excluding PCB Thickness).



P.C.Board Layout
 (Tolerance: ±0.05mm)



P.C. Board Layout For Bottom Entry Optional
 (Tolerance: ±0.05mm)

Series: 2143-1 X xx G xx D A T -P
 Single Row
 No. of Pin Per Row
 G: Gold Plated
 T: Tin Plated
 00: G/F
 10: 10μ
 15: 15μ
 30: 30μ
 Blank: W/O Pad
 P: Plastic Pad
 M: Metal Pad
 S: Tape Seal Pad
 T: Tape & Reel Package
 U: Tube Package
 A: A Type
 D: SMD Type

Position	2 Thru 40
Dimension	
A	2.0 X No. of Positions
B	2.0 X No. of Positions-2.0

Tolerances	Dwg. No.	2143D02001	Title:	
x = ±0.5	Projection		2143 Series	
.x = ±0.25	Unit	mm	P.C.B. Socket	
.xx = ±0.15	Scale	1:1	2.0mmX2.0mm	
	Drawn By	XCY08/16'12		

OUPIN			
OUPIN ELECTRONIC(KUNSHAN) CO., LTD.			
P/N: 2143-1XxxGxxDAT-P			
SHEET	1/1	Ver.No.	R4